

HyDefinition[®] RHF Console

Setup Configuration

***For Systems
with Short Torch Leads
(20'/6m or less)***

***Field Service Bulletin
803490 - Revision 0***

Hypertherm
*The world leader in
plasma cutting technology*

HyDefinition RHF Console Setup Configuration

for
*Systems with Short Torch Leads
(20'/6m or less)*

Field Service Bulletin IM-349 (P/N 803490)

Revision 0 December, 1998

**HYPERTHERM, Inc.
P.O. Box 5010
Hanover, New Hampshire 03755-5010
Tel.: (603) 643-3441
Fax: (603) 643-5352
<http://www.hypertherm.com>
[email:info@hypertherm.com](mailto:info@hypertherm.com)**

**© Copyright 1998 Hypertherm, Inc.
All Rights Reserved**

**Hypertherm, HyDefinition, HT and LongLife are trademarks of Hypertherm, Inc.
and may be registered in the United States and/or other countries**

HyDefinition RHF Console Setup Configuration

In this bulletin:

Introduction	2
Purpose	2
General	2
Applicability	2
Identifying Effected RHF Consoles	3
RHF Console Modification	4
Power Supply Modification	6

HyDefinition RHF Console Setup Configuration

INTRODUCTION



Purpose

This field service bulletin provides instructions for configuring HyDefinition systems to improve starting reliability, when using short torch leads (20 feet or less).

General

HyDefinition systems that use short torch leads and have an RHF console containing a three-capacitor spark gap assembly may experience decreased starting reliability. This bulletin includes instructions for modifying effected power supplies and RHF consoles to improve the reliability of the starting cycle.



Applicability

This field service bulletin applies to HyDefinition systems (HD1070 and HD3070) that use short torch leads (20 feet or less) and have an RHF console containing a three-capacitor spark gap assembly.

If your HyDefinition system does not use short torch leads (20 feet or less) disregard this bulletin.

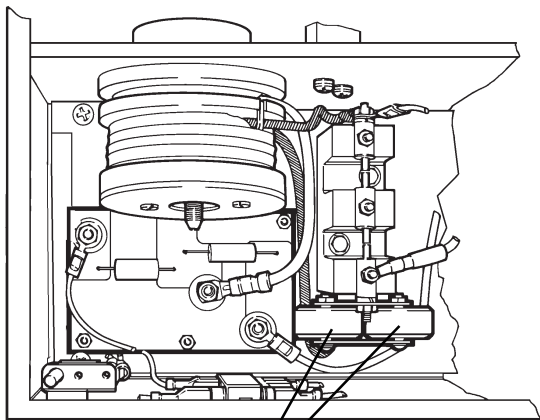
HyDefinition RHF Console Setup Configuration

Identifying Effected RHF Consoles

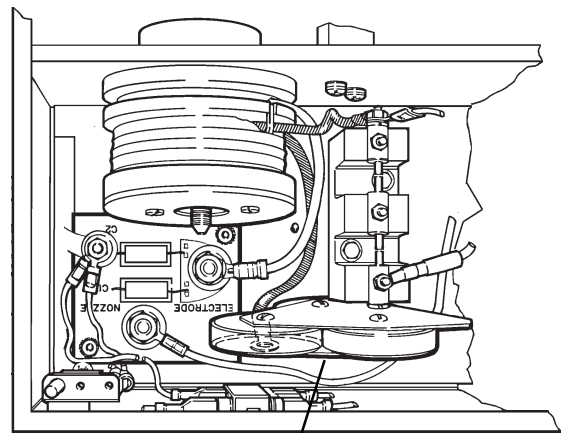
		WARNING ELECTRIC SHOCK CAN KILL
<p>Turn off the power, unplug the power cord and wait 5 minutes before opening RHF console. If the power supply is directly connected to a line disconnect switch, place switch in the OFF position. In the U.S., use a "lock-out / tag-out" procedure until the service or maintenance work is complete. In other countries, follow appropriate local or national safety procedures.</p>		

To determine if your system is equipped with a RHF console containing a three-capacitor spark gap assembly:

- ① Turn off power to the power supply and wait 5 minutes before opening the RHF console.
- ② Open the RHF console and examine the capacitors secured to the spark gap assembly.



- ③ Two capacitors.
No action required.



- ④ Three capacitors.
Modification recommended.

HyDefinition RHF Console Setup Configuration

RHF CONSOLE MODIFICATION

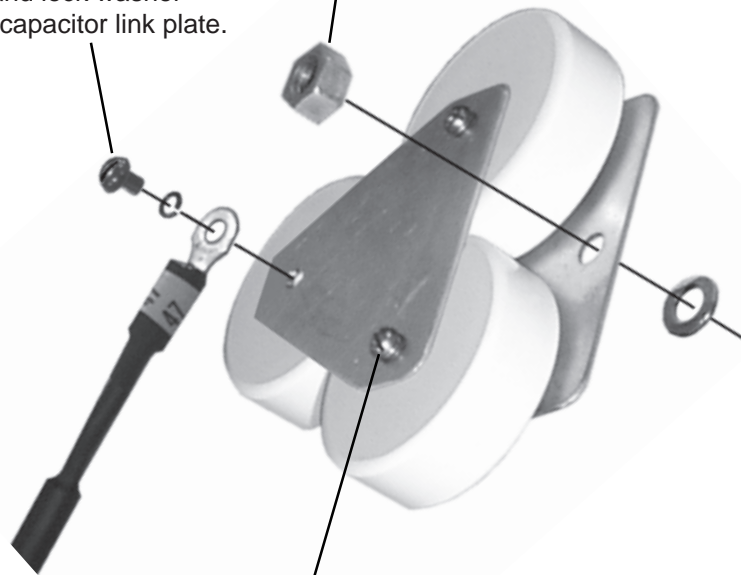


WARNING
ELECTRIC SHOCK CAN KILL

Turn off the power, unplug the power cord and wait 5 minutes before opening RHF console. If the power supply is directly connected to a line disconnect switch, place switch in the OFF position. In the U.S., use a "lock-out / tag-out" procedure until the service or maintenance work is complete. In other countries, follow appropriate local or national safety procedures.

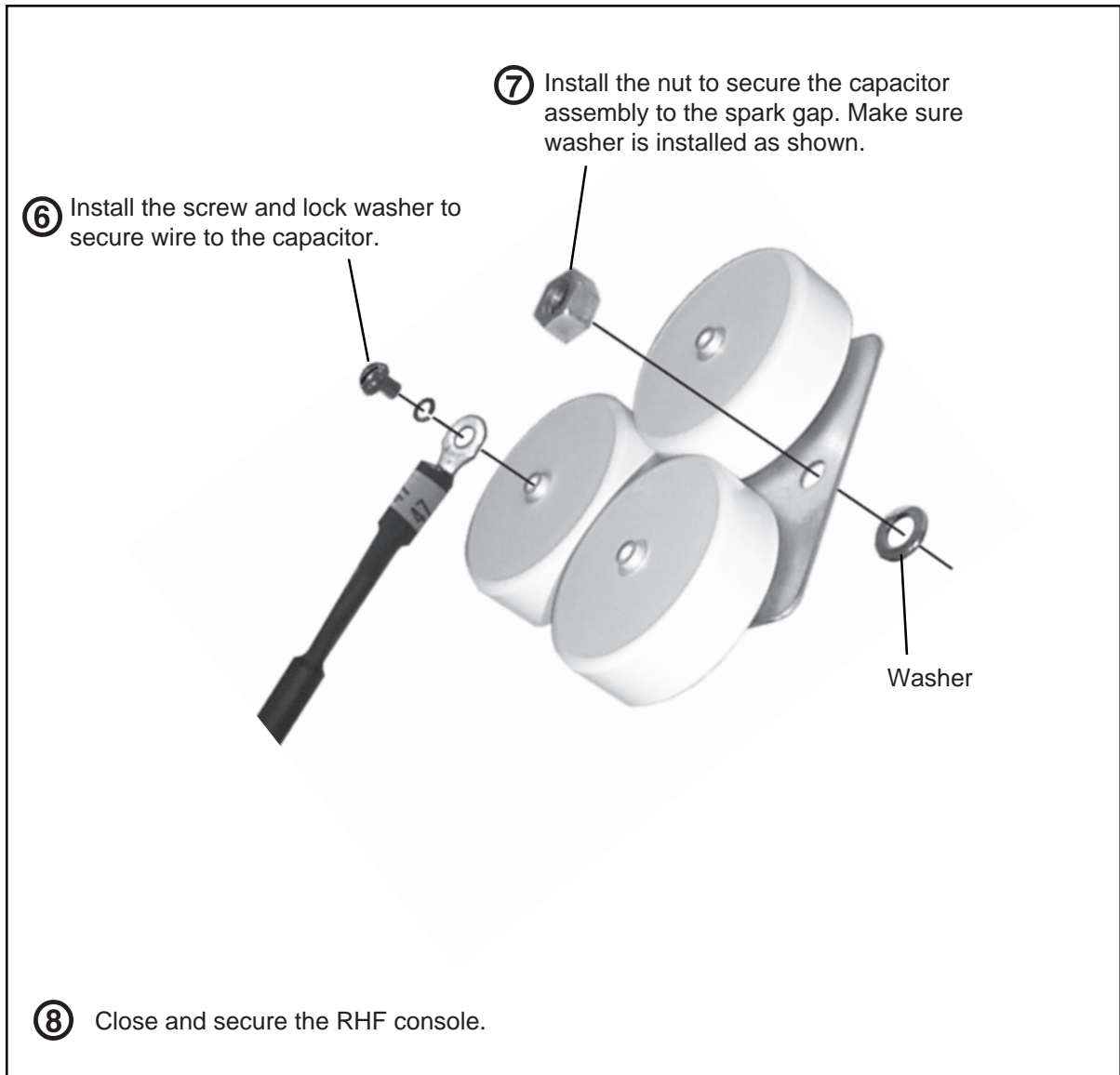
- ① Turn off power to the power supply and wait 5 minutes before opening RHF console.
- ② Open the RHF console and locate the capacitors secured to the spark gap assembly.

- ③ Remove nut and separate the capacitor assembly from the spark gap.
- ④ Remove the screw and lock washer securing wire to the capacitor link plate.



- ⑤ Remove the two screws and lock washers securing the link plate. Remove the link plate.

HyDefinition RHF Console Setup Configuration



HyDefinition RHF Console Setup Configuration

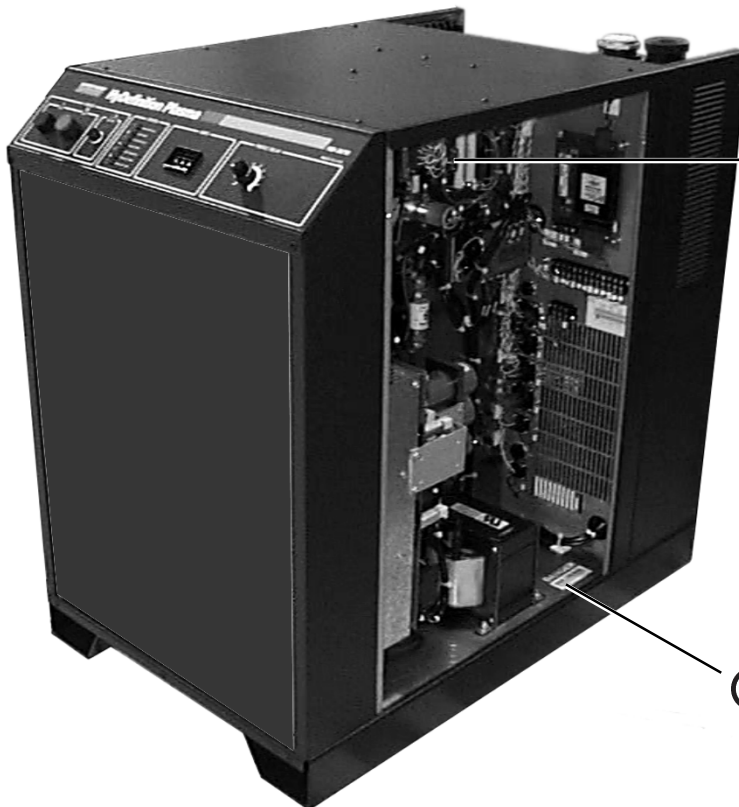
POWER SUPPLY MODIFICATION



WARNING
ELECTRIC SHOCK CAN KILL

Turn off the power, unplug the power cord and wait 5 minutes before removing any power supply cover. If the power supply is directly connected to a line disconnect switch, place switch in the OFF position. In the U.S., use a "lock-out / tag-out" procedure until the service or maintenance work is complete. In other countries, follow appropriate local or national safety procedures.

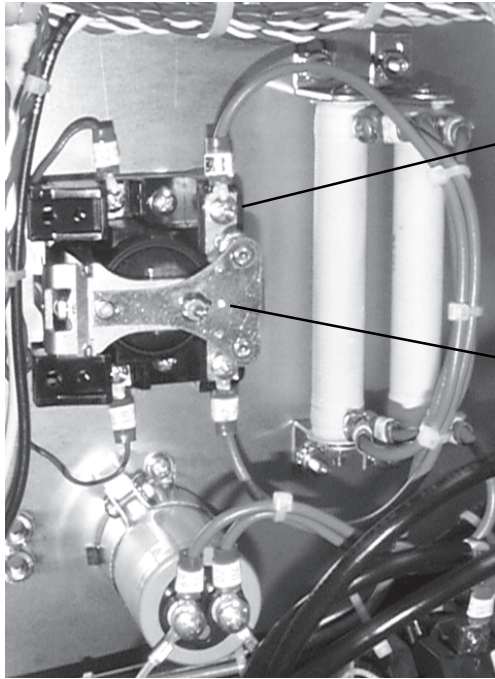
- ① Turn off power to the power supply and wait 5 minutes before removing power supply panel.



- ③ Locate relay CR4.

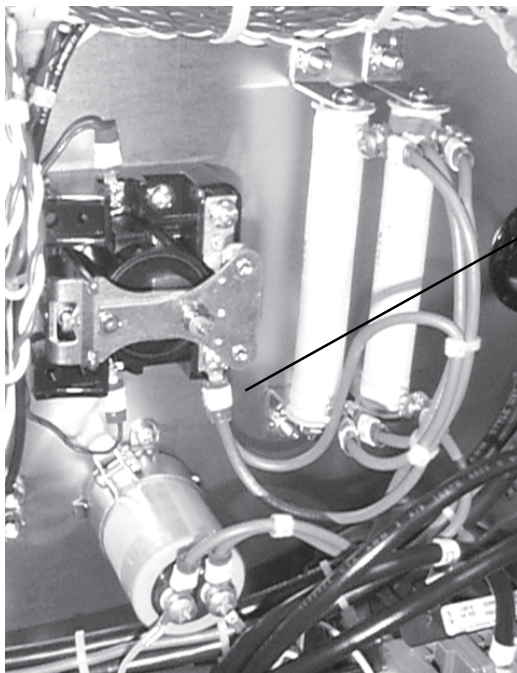
- ② Remove the right side panel of the power supply.

HyDefinition RHF Console Setup Configuration



④ Remove wire 66 from relay CR4.

Relay CR4.



⑤ Attach wire 66 along with wire 67 to the lower terminal of relay CR4.

⑥ Replace the right side pane to the power supply and secure in place.

HyDefinition RHF Console Setup Configuration

Blank