



# GeoPoint™ 6

## PUNCH SOFTWARE

### Power Made Simple

GeoPoint is MTC Software's programming solution for turret punch applications. It reflects our commitment to solutions that are not only powerful, but easy to learn and use. GeoPoint can be quickly installed on your PC, and the intuitive interface allows even the most inexperienced user to navigate the application with ease. With the power to manage the most demanding punch programming applications, GeoPoint is **Power Made Simple!**

### Increase Profits

GeoPoint delivers the latest advances in sheet metal punch programming technology that allows you to reduce your manufacturing costs and improve profits. This is achieved through GeoPoint's built-in flexibility. You can configure GeoPoint specifically for your needs, while at the same time streamlining the entire punch programming process. So whether you want to import CAD files, perform manual or automatic part nesting operations, configure a custom tool path, or output NC code; GeoPoint can manage the job!

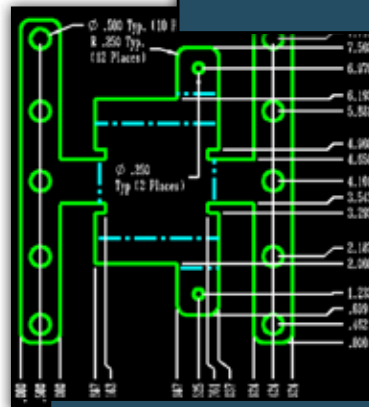
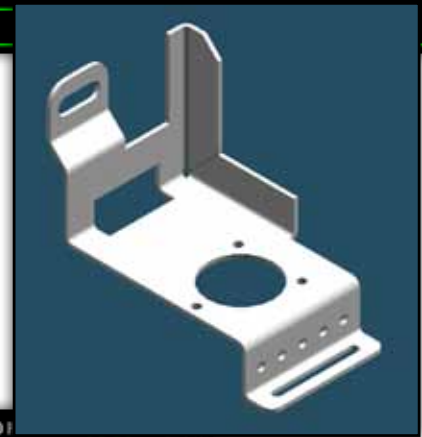
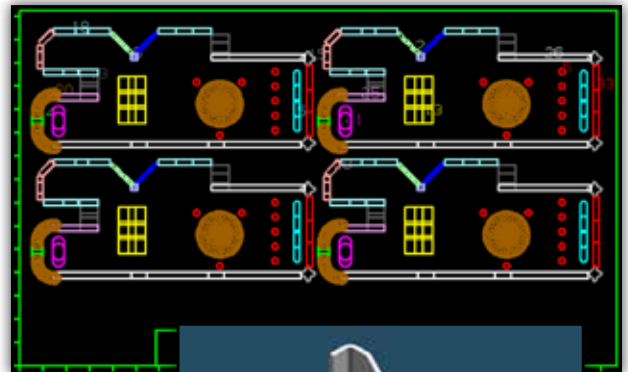
### Unfolding

GeoPoint easily imports CADL or DXF 3D wireframe parts and exports CADL or DXF 2D wireframe parts via the GeoFold module. The operator is supplied with all pertinent information about the part including bend lines, angles, radii, and K factors used to calculate the flat part. GeoPoint will also work with the unfolding modules supplied with many solid modelers.

### Sheet Layout

Parts may be quickly nested on a sheet in either the CAD environment or in GeoPoint, which selects tooling to meet your specified requirements. GeoPoint compares the flat pattern/sheet layout graphics to the tooling library and automatically selects the proper tools, per your specifications. A graphics interface then allows easy editing or modification of punching procedures, priorities, cycles, etc. Multiple configurations are permitted for the user with more than one machine to support. Special tool shapes are fully supported and selected automatically. A standard turret setup may be defined for setup time reduction. Part peripheries are automatically handled according to your specifications, including generation of user-specified micro joints (shaker tabs), configurable for different material thicknesses.

GeoPoint can also be tightly integrated with ProNest®, MTC Software's advanced nesting solution, which offers Advanced True Shape Automatic Nesting. Integration with ProNest allows the system to automatically nest the true profile of each part, either on standard sheets, or on remnants from earlier nests. An unlimited number of parts may be nested and a random mixture of parts can be handled in a single nest and if needed, parts may be rotated and/or mirrored during the nesting process to maximize sheet utilization. ProNest maintains an active orders list, tracks orders using a powerful order-scheduling manager, maintains a part assembly database, and maintains historical records for cost analysis management.



MTC software®  
POWER MADE SIMPLE®



# GeoPoint™ 6

PUNCH SOFTWARE

## Torching

Torching or “burning” operations, including laser or plasma processes, are fully supported for any punch/burn combination machines. GeoPoint provides you with the control over cut entry and exit, cut cycles, trap doors, cutting conditions, cutter compensation, etc.

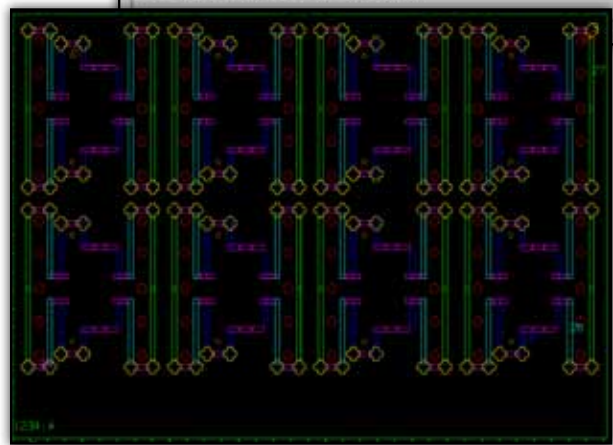
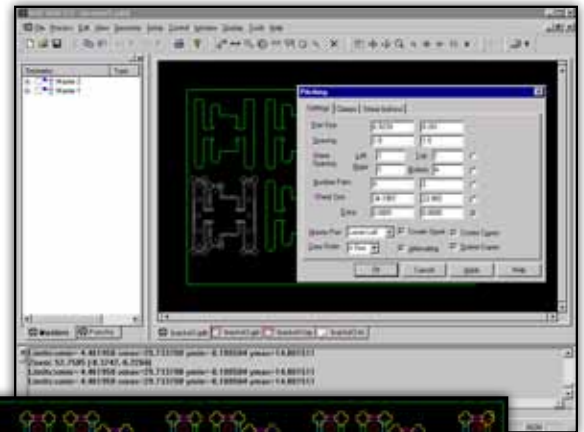
## NC Output and Increased Efficiency

Once punching and/or burning parameters have been defined, they are automatically written to a source level language. Then GeoPoint tool sorts, optimizes tool paths, automatically repositions (if necessary) to avoid clamps or for long parts, and creates an NC file complete with subroutines and “canned” cycles for your specific machine tool. Setup sheets are automatically created according to your specifications as an integral part of the NC file or as a separate document. Customizable setup sheets may contain information including sheet size and weight, cycle time as well as all necessary data for operator setup and run. Files are ready for downloading, printing, or punching; whatever your needs may be!

GeoPoint eliminates the costly waste associated with manual programming and shop floor trial runs. After a part has been nested, the system generates and displays the tool-hits and motion of the machine tool, verifying full optimization.

## Features Include

- Automatic repositioning
- Utilization of machine canned cycles
- Tool sorting
- Shortest path optimization
- Duplicate hit removal
- Clamp violation detection and auto-avoidance
- Optimization on either side of a reposition
- Tool reassignment capability
- Bridge Punching
- Customized post processors
- Capability to edit or modify NC source
- Integrated right-angle shearing package
- “Cluster” punch support



## Our Commitment

MTC Software provides your business with the industry’s best software solutions and product support. GeoPoint, like all MTC Software products, is engineered to help you get the most from your machine investment. By investing in MTC Software, as thousands of other companies have over the past 25 years, you can feel comfortable that you’re partnered with a company that measures its success by ensuring yours.



**MTC software®**  
POWER MADE SIMPLE™  
[www.mtc-software.com](http://www.mtc-software.com)

MTC Software, Power Made Simple, ProNest, and Hypertherm are trademarks of Hypertherm, Inc. and may be registered in the United States and/or other countries.

© 08/10 Hypertherm, Inc. Revision 1  
DS-GP62010NA

### Americas

**United States – Central Operations** [mtc@mtc-software.com](mailto:mtc@mtc-software.com) | +1 (716) 434-3755

**Canada** [mtcCA@mtc-software.com](mailto:mtcCA@mtc-software.com) | **Mexico** [mtcMX@mtc-software.com](mailto:mtcMX@mtc-software.com) | **Brazil** [mtcBR@mtc-software.com](mailto:mtcBR@mtc-software.com)

### Asia Pacific

**Singapore** [mtcSG@mtc-software.com](mailto:mtcSG@mtc-software.com) | **China** [mtcCN@mtc-software.com](mailto:mtcCN@mtc-software.com) | **Japan** [mtcJP@mtc-software.com](mailto:mtcJP@mtc-software.com)

**Australia** [mtcAU@mtc-software.com](mailto:mtcAU@mtc-software.com)

### Europe, Middle East, and Africa

**United Kingdom** [mtcUK@mtc-software.com](mailto:mtcUK@mtc-software.com) | **Netherlands** [mtcNL@mtc-software.com](mailto:mtcNL@mtc-software.com)