

Phoenix[®] v8

Phoenix version 8 is a major new release of the Phoenix software for CNCs from Hypertherm Automation. It provides new functionality that improves ease of use, facilitates operator training, and enhances serviceability. The major advancements in this software release are:

- The CutPro™ Wizard, a patent-pending step by step guide for the operator to run the CNC.
- The new Remote Help™ utility provides connectivity between your CNC, your channel partner, and Hypertherm for collaborative troubleshooting of your table, plasma system, and CNC.
- Custom cut charts, for running unique cutting parameters.
- Remnant utilization, for teaching plate remnants for later processing.

Each of these new features is designed to improve table uptime and reduce the total cost to operate the cutting table.

The CutPro Wizard

The CutPro Wizard, a patent-pending method that enables new operators to perform a routine job setup and start cutting production parts in less than five minutes without training. This increases your workforce flexibility and drastically reduces your “Hire to Cut” time.

The steps it includes are:

- Loading part programs
- Selecting a cutting process
- Aligning a plate and adjusting for skew
- Selecting scrap clearance
- Picking a cutting process (or trial mode to verify the program) and starting the cut

In beta site testing, one OEM was able to sequentially teach 14 operators how to operate the CNC for these functions in less than an hour. Individually, it will now be possible to have an operator go from “Hire to Cut” in less than 5 minutes.

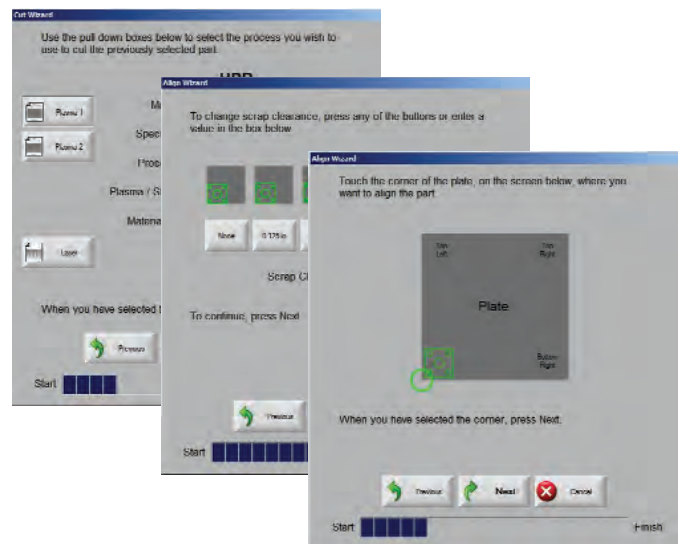


Choices are restricted to what most operators actually need, reducing confusion and chances for error.

Large drop down menus for improved accuracy.

Short descriptions to eliminate confusion and speed up the process.

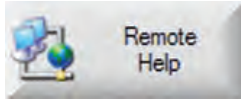
Graphical display drastically simplifies interpretation.



Hypertherm[®]

Remote Help™ utility

An easy to use and secure method of remotely connecting your Hypertherm Automation CNC to your OEM over the internet for technical support. In less than a minute, it will now be possible to provide the table manufacturer access to:



- Observe the CNC screens safely while an operator is running the machine.
- Reviewing settings/setups.
- Securely transfer files → such as setup files, part programs, software updates, as needed.
- Ability to troubleshoot both the plasma and the cutting table.
- Add additional parties to the same session when needed.

This last point enables up to 15 connections on the same session over the internet so that if additional expertise is needed, everyone can see the same information at the same time. This can substantially reduce service time and cost – in some cases eliminating costly travel and down time to address a table issue.

Using this utility, one OEM was able to establish a session where the end user, two technicians from the OEM (at separate locations), Hypertherm technical support, and the drive manufacturer were able join the same session and resolve an issue in less than two hours. Previously, this diagnosis might have required travel to address what turned out to be a fairly easily corrected parameter.

Custom Cut chart capability

While it is always great to have pre-tested plasma cut charts in the CNC, it does happen that less common materials may not have been tested by Hypertherm. This new feature enables storage and retrieval of custom cut charts for unique processes so that jobs can be run consistently every time without having to recreate the process parameters. After these files are created they will be stored in the cut chart database and retrievable on demand.

Remnant Utilization and Nesting

This is a new utility within Hypernest for identification and storage of remnant files on the CNC for future processing. The operator can use the CNC to teach the edge locations of the remnant plate so that it can be used later for additional cut programs. It is stored with a unique file name, and when retrieved, a part or nest can be used to utilize the remainder of the plate.

In addition, Version 8 delivers 40 features requested by customers for advanced process control on the CNC.

Hypertherm, Phoenix, CutPro and Remote Help are trademarks of Hypertherm, Inc. and may be registered in the United States and/or other countries.

© Copyright 6/08 Hypertherm, Inc. Revision 0
893090

Hypertherm®

Hypertherm, Inc.
Hanover, NH 03755 USA
603-643-3441 Tel

Hypertherm (S) Pte Ltd.
Singapore 349567
65 6 841 2489 Tel

**Hypertherm (Shanghai)
Trading Co., Ltd.**
PR China 200052
86-21 5258 3330 /1 Tel

Hypertherm Europe B.V.
4704 SE Roosendaal, Nederland
31 165 596907 Tel

HYPERTHERM BRASIL LTDA.
Guarulhos, SP - Brasil
55 11 6409 2636 Tel

www.hypertherm.com

Genuine Hypertherm Consumables

The only way to ensure maximum performance

CELEBRATING
40 YEARS