



# Consumables for ESAB<sup>®</sup> mechanized systems with PT-36 (m3 system) and PT-36(R) torches



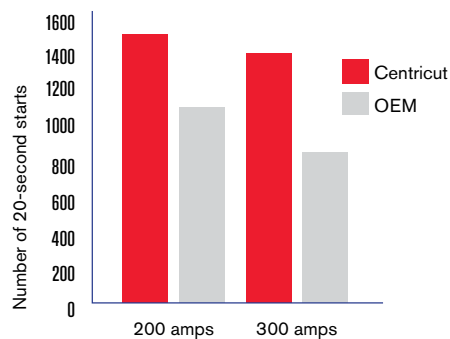
# Upgrade to Centricut® performance consumables to lower operating costs without sacrificing cut quality and productivity.



## Lower operating costs

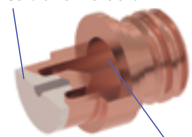
- Centricut consumables last up to 30% longer than the OEM.
- Cut consumables usage and reduce system downtime.
- Our full line of consumables, including products for XR applications, are competitively priced as compared to the OEM.

Consumable life



SilverLine electrode

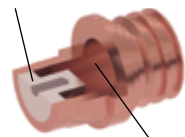
Solid silver front-end



Optimized coolant flow path

ESAB electrode

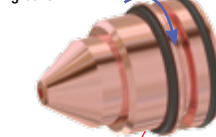
Silver insert



Less efficient cooling

CoolFlow nozzle

Deep cooling groove



Thick nozzle walls

ESAB nozzle

Inefficient cooling



Thinner nozzle walls

## SilverLine electrode technology

- A solid silver front end maximizes cooling and minimizes hafnium wear.
- Advanced coolant flow design reduces the temperature of the electrode and maximizes life.
- Robust welded copper/silver interface delivers consistent performance.

## Cut with confidence – it's Hypertherm

- Hypertherm, a global leader in plasma cutting, incorporates the latest engineered and patented technologies into all consumable products.
- Designed with critical-to-function tolerances to deliver the best quality product every time.
- Precision manufacturing of consumables assures consistency of parts set to set.
- Easy to use – no special system set up required.
- SilverLine® electrodes and CoolFlow™ nozzles deliver exceptional cut quality and fast cutting speeds over the full life of the consumables.

## CoolFlow nozzle technology

- Computer-designed contours optimize the coolant flow in the nozzle and substantially lower the operating temperature.
- Thicker nozzle walls dissipate heat away from the orifice more efficiently, leading to cooler operation.
- Cooler nozzle operation directly translates into longer life of all consumables.



# The Centricut® quick-change torch delivers increased performance, productivity and reliability to your ESAB® cutting process.

## Upgrade today to a better cutting experience with the Centricut quick-change torch

- Superior replacement for ESAB PT-36, PT-600 and PT-19XLS one-piece torches
- Multiple pre-loaded torch heads allow operators to be ready for their next cutting job
- Competitively priced as compared to OEM
- Rated for applications up to 450 amps

## Centricut torch features:

### Hypertherm engineering

Designed with proven materials and components by Hypertherm for optimal torch performance.

### Two-piece design

Detachable torch head makes consumable maintenance and replacement quick and easy.

### Flexibility

With just a change of the mounting nut, one torch head can be used with PT-36, PT-600 or PT-19XLS consumables.

### Compatibility

Use a Centricut quick-change retaining cap to maintain standard overall torch length (important for bevel cutting). Compatible with all other Centricut or OEM consumables.

### Easy installation

Check out our installation video (link below). Our torch is easy to install and fully compatible with OEM cut settings.

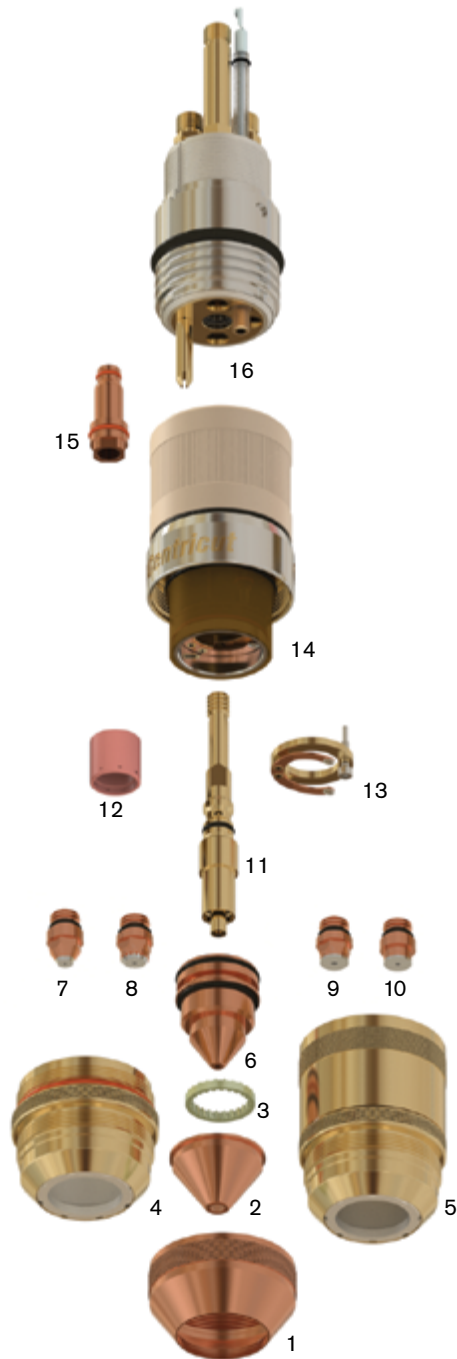


[www.hypertherm.com/Etorchinstall](http://www.hypertherm.com/Etorchinstall)

Note: The Centricut quick-change torch upgrade kit includes all the components needed to convert to quick-change torch technology and provide excellent cutting results.



# Centricut® torches and consumables add value to your plasma cutting process through long life and exceptional quality.



## Parts list

	Centricut number	Reference number	Description
1	C47-081	37081	Shield retainer
	L122-616	0558009395	Shield retainer, insulated
2	C122-624	0558007624	Shield, 2.4 mm, 45-55 A
	C122-130	0558006130	Shield, 3.0 mm, 35-50 A
	C122-141	0558006141	Shield, 4.1 mm, 100-280 A
	C122-166	0558006166	Shield, 6.6 mm, 260-450 A
	C122-199	0558006199	Shield, 9.9 mm, 360-600 A
	L47-796	21796	Diffuser, 50 A
3	C47-944	21944	Diffuser, 100-600 A
	C47-496	22496	Diffuser, rev, 100-600 A
4	C122-082	N/A	Nozzle retaining cap, quick-change
5	C47-082	37082	Nozzle retaining cap
6	C122-908	0558006908	CoolFlow™ nozzle, 0.8 mm, 35 A
	C122-8010	0558008010	CoolFlow nozzle, 1.0 mm, PR, 45-55 A
	C122-6010	0558006010	CoolFlow nozzle, 1.0 mm, 50 A
	C122-014	0558006014	CoolFlow nozzle, 1.4 mm, 100 A
	C122-018	0558006018	CoolFlow nozzle, 1.8 mm, 130 A
	C122-020	0558006020	CoolFlow nozzle, 2.0 mm, 200 A
	C122-023	0558006023	CoolFlow nozzle, 2.3 mm, 280 A
	C122-025	0558006025	CoolFlow nozzle, 2.5 mm, 300 A
	C122-030	0558006030	CoolFlow nozzle, 3.0 mm, 360 A
	C122-036	0558006036	CoolFlow nozzle, 3.6 mm, 450 A
	C122-041	0558006041	CoolFlow nozzle, 4.1 mm, 600 A
7	C122-1059	0558005459	SilverLine® electrode, 02, 45-90 A
8	C122-1014*	N/A	SilverLine electrode, long life, 200-450 A
9	C122-1091	0558007791, 0558003914	SilverLine electrode, 02, 260-450 A
10	C122-1000	0558012000, 0558003914	SilverLine electrode, 02, 100-450 A, XC
	C122-928	0558003928	Electrode, SS/AL, 600 A
11	C122-924	0558003924	Electrode holder
12	C122-457	0558005457	Gas swirl baffle, 4X.022, 35-70 A
	C122-533	0558002533	Gas swirl baffle, 4X.032, 100-280 A
	C122-530R	0558002530R	Gas swirl baffle, 8X.047, rev, 360-450 A
	C10-660	0558001625	Gas swirl baffle, 8X.047, 300-600 A
13	C47-071	37071	Contact ring
	C122-548	0558009548	Shield retainer, XC
	C122-766	0558010766	Shield, 6.6 mm, XC
	C122-551	0558009551	Shield, 5.1 mm, XC
	C122-550	0558009550	Nozzle retaining cap, XC
	C122-948	N/A	Nozzle retaining cap, quick-change, XC
	C122-619	0558011619	CoolFlow nozzle, 1.9 mm, 200 A, XC
	C122-722	0558010722	CoolFlow nozzle, 2.2 mm, 260 A, XC
	C122-625	0558011625	CoolFlow nozzle, 2.5 mm, 360 A, XC
	C122-028	0558006028	CoolFlow nozzle, 2.8 mm, 450 A, XC
15	C122-055	N/A	Electrode holder mounting nut
	C122-8100	N/A	Torch upgrade kit, quick-change, PT-36
	C122-9100	N/A	Torch upgrade kit, quick-change, PT-36, XC
14	C122-8050	N/A	Torch head kit, quick-change
16	C122-8000	N/A	Torch base, quick-change

\*C122-1014 is not recommended for cutting under 200 amps or marking applications.

For more information on Centricut products,  
visit [www.hypertherm.com/centricut](http://www.hypertherm.com/centricut)

Hypertherm, Centricut, SilverLine, and CoolFlow are trademarks of Hypertherm Inc. and may be registered in the United States and/or other countries. All other trademarks are the property of their respective owners. Hypertherm is in no way affiliated with ESAB.

One of Hypertherm's long-standing core values is a focus on minimizing our impact on the environment. Doing so is critical to our, and our customers' success. We are always striving to become better environmental stewards; it is a process we care deeply about.

© 8/2016 Hypertherm Inc. Revision 4  
880840

**Hypertherm®**  
SHAPING POSSIBILITY™

