

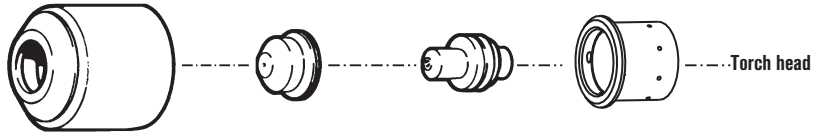
# Hypertherm<sup>®</sup>

## MAX20

### PAC110 hand torch consumables



#### Standard consumables



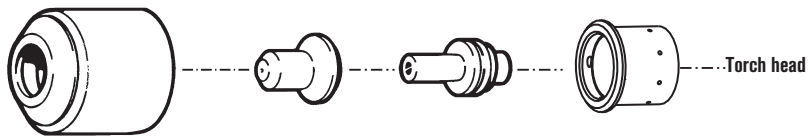
Retaining cap  
220016

Nozzle  
020299

Electrode  
020220

Swirl ring  
220013

#### Extended\* consumables



Retaining cap  
220016

Nozzle  
020381

Electrode  
020382

Swirl ring  
220013

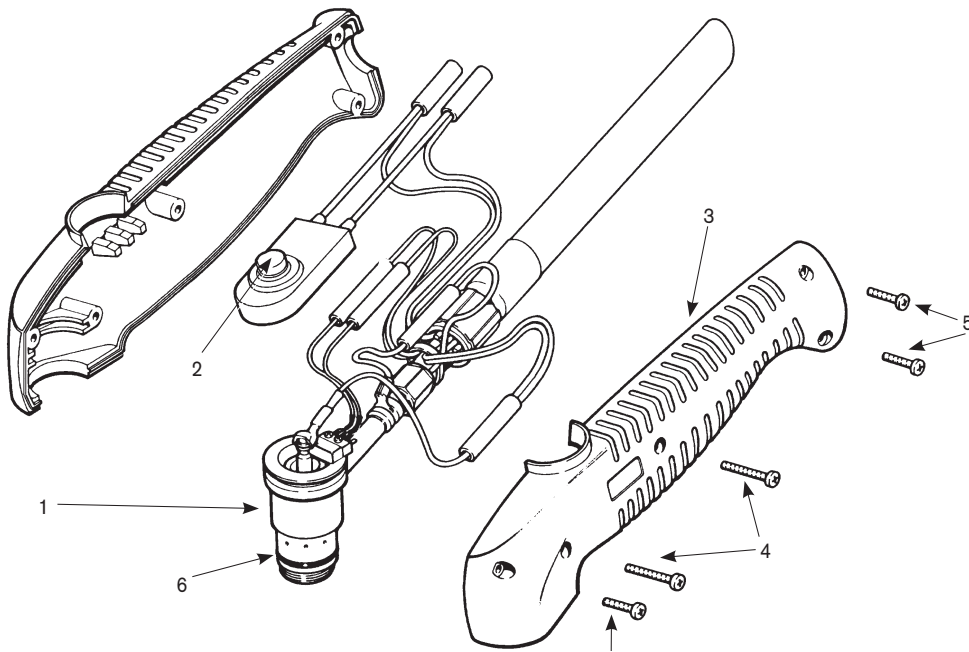


\* In countries following CE standards, unshielded consumables may only be used in mechanized torch applications.

Hypertherm, MAX and PAC are trademarks of Hypertherm, Inc. and may be registered in the United States and/or other countries.

# MAX20

## PAC110 hand torch assembly



### Assembly

Part number	Description
070003*	PAC110 torch assembly with 15' (4.6 m) leads
070014*	PAC110 torch assembly with 25' (7.6 m) leads
1. 020588	Torch main body with switch
2. 005094	Switch, torch pushbutton
3. 001192	Handle (includes both halves)
4. 075341	Screw, #4 x 3/4" (two required)
5. 075339	Screw, #4 x 1/2" (three required)
6. 044016	O-ring, Buna – N 90 Duro
029241	Torch leads, 15' (4.6 m)
029257	Torch leads, 25' (7.6 m)
023269	Work lead with clamp, 15' (4.6 m)

\*Assembly includes consumables

