



ArcGlide® THC Firmware Update

Background: The ArcGlide THC motor control, part number 090054, contains the core operating software for the height control functions. It is written to a custom chip set that is programmable using firmware. Periodically new releases of the firmware (software) will be made available for update. These files will be posted to the ArcGlide THC page in the “downloads” section on the Hypertherm web site. This document provides the steps to achieve the update.

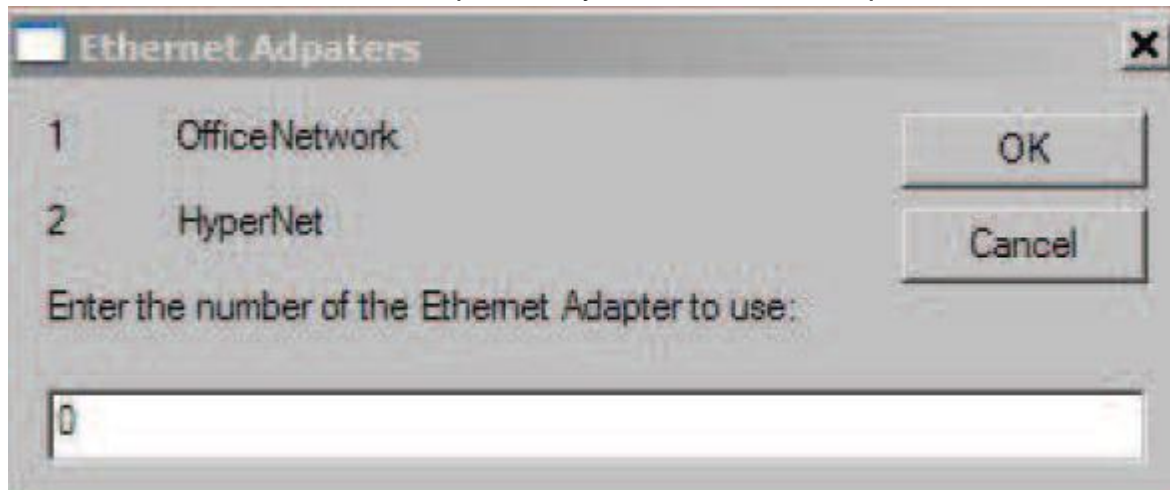
Details:

The following information is from section 4-14 of the ArcGlide THC Instruction Manual.

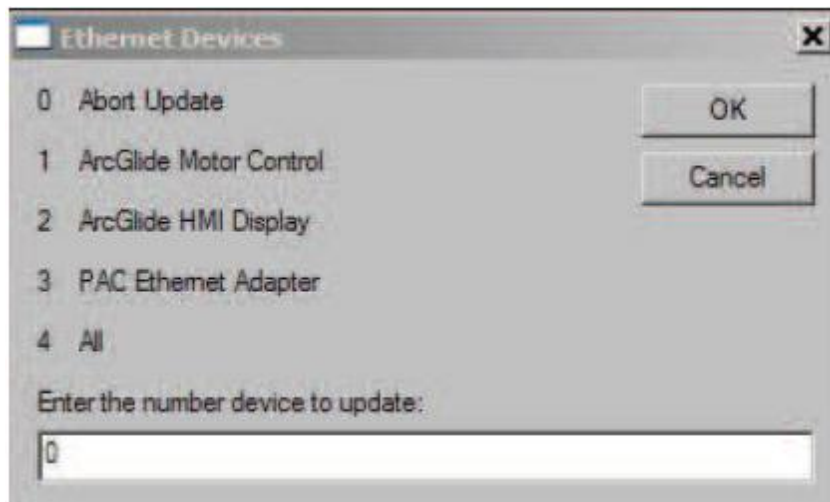
MAINTENANCE

To update ArcGlide THC software:

1. After you download the AGUpdater.zip file, unpack it in a directory on the laptop hard drive or on a memory stick. One of the files included will be “EthernetSetup.vbs”. There will also be some program image .bin files and Update.exe files to load the images.
2. Plug the laptop into the devices that you want to update or the Ethernet switch if you want to update multiple units.
3. Navigate to the directory where you downloaded the files.
4. Double click-on the EthernetSetup.vbs file. A dialog box displays that lists the Ethernet ports that are installed on the computer.
5. Enter the number of the adapter that you want to use to update the ArcGlide unit.



6. After a short delay, a dialog box displays with a list of the devices you can update.



7. Enter the number of the device that you want to update from the list on the dialog box. Select 0 to exit without updating.

8. When the update process is complete, the program returns the network settings to their original settings and exits.

For further information or assistance, please contact your local Hypertherm Technical Support Team.