

NC2CAD™

NC code translation software

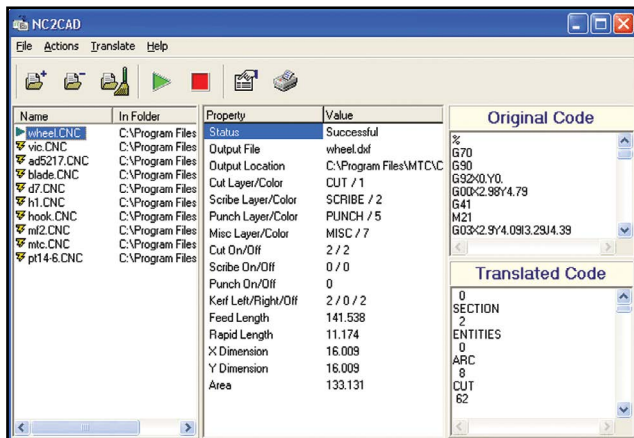
Productivity made easy

NC2CAD provides a convenient method of converting numerical control (NC) part/nest files into DXF format.

The entities for each machine process are placed on individual, user-defined layers. NC2CAD is an ideal way to convert an existing NC part/nest library into an industry-standard CAD format for further modification or quality assurance inspection.

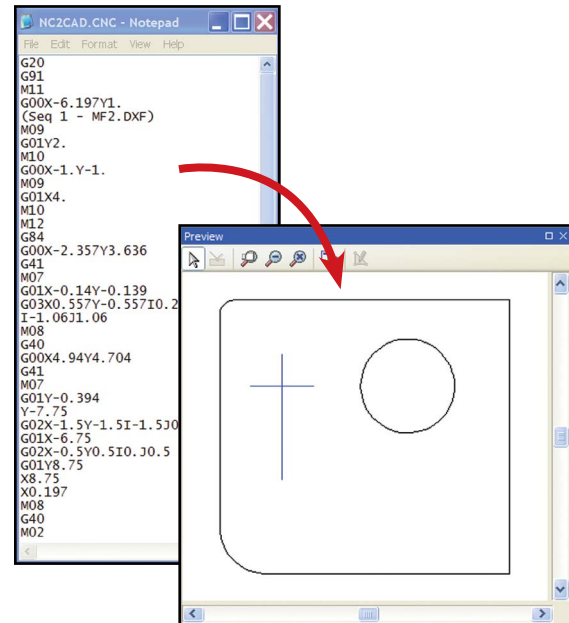
Feature overview

Quickly build a list of files to be translated by selecting single or groups of files within NC2CAD. It's as easy as selecting parts, setting translation properties, and clicking the process button. NC2CAD will automatically batch process all files in the list. The original NC code and converted DXF file as well as the summary information for each translated file can then be viewed. Once files have been converted to DXF format, they can be read into any CAD program that supports DXF files. Then, features of the user's CAD program may be used to modify the part/nest or use the dimension and properties features to verify their accuracy.



Standard features

- Fast, easy way to convert files from CNC format into DXF CAD files
- Works with many cutting machine controller formats
- Save and load conversion properties to handle different translation tasks
- Control the layer name and color for each process converted
- Code preview for original NC code and translated DXF file
- View process, kerf, feed length, rapid length, dimensions, and area of every translated file
- Summary report of translation information



Hypertherm and NC2CAD are trademarks of Hypertherm Inc. and may be registered in the United States and/or other countries. All other trademarks are the property of their respective owners.

One of Hypertherm's long-standing core values is a focus on minimizing our impact on the environment. Doing so is critical to our, and our customers' success. We are always striving to become better environmental stewards; it is a process we care deeply about.

