

# Powermax30 XP

Recommended cut capacity of 10 mm (3/8")

Severance capacity of 16 mm (5/8")

Professional grade



Part of the Powermax® family, the Powermax30 XP is a highly portable two-in-one plasma cutter providing high-power capability for mechanized cutting on thick metal and detailed, thin metal.

## Key business benefits

### Simplify operations and boost productivity

Easy-to-use interface and drag-cutting consumables reduce training time and improve cut quality

### Minimize operating costs

Up to 10x longer consumable life compared to competitors decreases operating costs

### High uptime and reliability

Robust design and long-lasting consumables ensure system durability and long life

## Portable and versatile.

Highly portable, the Powermax30 XP handles a wide range of jobs and provides high-power capability for thick metal cutting and FineCut® consumables for detailed, thin metal cutting.

With a dual-voltage design, it can run on a 240 V circuit and, depending on the region, a 120 V circuit.

## Cut and gouge capacities

| Capacity       | Thickness    | Cut speed           |
|----------------|--------------|---------------------|
| <b>Cutting</b> |              |                     |
| Recommended    | 10 mm (3/8") | 500 mm/min (20 ipm) |
|                | 12 mm (1/2") | 250 mm/min (10 ipm) |
| Severance      | 16 mm (5/8") | 125 mm/min (5 ipm)  |

|               |                                 |
|---------------|---------------------------------|
| Torch output* | 3.75 kW                         |
|               | 30 A x 125 V ÷ 1000 W = 3.75 kW |

\*Higher output voltage at the torch plus efficiently designed consumables result in a faster, cleaner cut.

**Unique “two-in-one” design provides high-power capability for thick metal cutting and FineCut consumables for detailed, thin metal cutting.**

**THE BEST  
INVESTMENT  
IS IN YOUR  
POWER**



## Specifications – CSA

## Specifications – CE

## Specifications – CCC

|                               |                              |
|-------------------------------|------------------------------|
| Input voltages (± 10%)        | 120-240 V, 1-PH, 50/60 Hz    |
| Input current @ 3.8 kW        | 120-240 V, 1-PH, 25.5-18.8 A |
| Output current                | 15-30 A                      |
| Rated output voltage          | 125 VDC                      |
| Duty cycle @ 40° C (104° F)   | 35%, 240 V                   |
|                               | 20%, 120 V                   |
| Open circuit voltage (OCV)    | 256 VDC                      |
| Weight with 4.5 m (15') torch | 9.5 kg (21.4 lbs)            |

CSA – for use in the Americas and Asia, except China.

CE – for use in Europe, Australia & New Zealand - RCM, Serbia, UK - UKCA, Ukraine, and other countries where accepted.

CCC – for use in China.

|  |   |
|--|---|
| Dimensions with handles                  | 356 mm (14.0") D; 140 mm (5.5") W; 292 mm (11.5") H |
| Gas supply                               | Clean, dry, oil-free air or nitrogen                |
| Recommended gas inlet flow rate/pressure | 113.3 l/min (4 scfm) @ 80 psi (5.5 bar)             |
| Input power cable length                 | 3 m (10')   |
| Power supply type                        | Inverter – IGBT                                     |
| Engine drive requirement                 | 5.5 kW for full 30 A output                         |
| Recyclability                            | 100%  |
| Warranty                                 | Power supply: 6-year, Torch: 1-year                 |

## Highlighted product features:

### Easy to use

- Simplified operations get you cutting quickly and easily
- Small and lightweight, the Powermax30 XP delivers whenever and wherever you need it
- Quickly cut metal grate or rusted metal without retriggering with the continuous pilot arc feature

### Versatile

- Plug into any 120 or 240 V circuit (convenient Auto-Voltage™ technology and plug adapters included)
- Two-in-one design for maximum versatility with high power for thicker metals and FineCut consumables for high-quality cuts on thinner metals

### Industry-leading reliability

- Powermax plasma cutters are known to last decades in the field, minimizing maintenance and downtime
- Torches are engineered for rugged industrial environments

Each Powermax component is tested to perform reliably in demanding conditions

## Our customers' preferred cutting tool for industries including:

- Automotive repair/restoration
- Metal art and signage
- Property/plant maintenance
- HVAC/mechanical contracting
- Educational/trade schools
- Agricultural/equipment maintenance



## Ordering information – CSA

Below are the standard system configurations, which include a power supply, torch, and work lead

|   | Duramax LT torch hand torch with 4.5 m (15') lead and work clamp with 4.5 m (15') lead |            |
|---|--|------------|
| Powermax30 XP® power supplies   | Handheld   | Mechanized |
| 120-240 V CSA handheld standard and carry case, gloves, and shade 5 glasses | 088079   |            |
| 120-240 V CSA standard handheld   | 088081   |            |
| 120-240 V CSA mechanized  |  | 088178     |

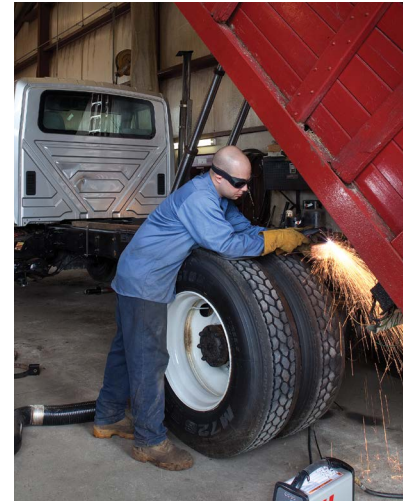
CSA – for use in the Americas and Asia, except China

## Ordering information – CE

Below are the standard system configurations, which include a power supply, torch, and work lead

|   | Duramax LT torch hand torch with 4.5 m (15') lead and work clamp with 4.5 m (15') lead |  |
|---|--|--|
| Powermax30 XP® power supply                   | Handheld   |  |
| 120-240 V CE standard                         | 088082   |  |
| 120-240 V CE handheld standard and carry case | 088083   |  |

CE – for use in Europe, Australia & New Zealand - RCM, Serbia, UK - UKCA, Ukraine, and other countries where accepted.



## Ordering information – CCC

Below are the standard system configurations, which include a power supply, torch, and work lead

|                             | Duramax LT torch hand torch with 4.5 m (15') lead and work clamp with 4.5 m (15') lead |  |
|-----------------------------|--|--|
| Powermax30 XP® power supply | Handheld   |  |
| 120-240 V CCC standard      | 088084   |  |

CCC – for use in China

## Torch consumable parts

| Consumable type | Torch type | Amperage | Shield/Deflector | Retaining cap | Nozzle                               | Electrode | Swirl ring |
|-----------------|------------|----------|------------------|---------------|--------------------------------------|-----------|------------|
| Standard        | Hand       | 30       | 420116           | 420114        | 420118                               | 420120    | 420211     |
| FineCut         | Hand       | 30       | 420115           | 420114        | 420117                               | 420120    | 420211     |
| HyAccess™       | Hand       | 30       |                  | 420148        | 420144 (cutting)<br>420147 (gouging) | 420137    | 220670     |
| Mechanized      | Machine    | 30       | 220673           | 420148        | 420118                               | 420137    | 420211     |

Electrodes and nozzles are sold in packs of five, as well as combination packs of 2 electrodes and 2 nozzles.

| Description         | Part number |
|---------------------|-------------|
| Standard combo pack | 428243      |
| FineCut combo pack  | 428244      |

## 088079 Hand system includes

- Power supply, 4.5 m (15') Duramax™ LT hand torch with standard consumables, 4.5 m (15') work clamp
- 240 V/20 A plug with adapters for 120 V/15 A and 240 V/20 A circuits
- Operator and safety manuals
- Consumable kit with 1 standard nozzle, 1 electrode, 1 FineCut® nozzle and 1 FineCut deflector
- Plastic carry case
- Carrying strap
- Leather gloves
- Shade 5 glasses



## Consumable kits



### Essential consumable kit

Essential kits provide a convenient assortment of standard consumables for your Powermax® system. The storage case protects and organizes your consumables and provides part number information for ease of reordering your consumables. Made in USA.

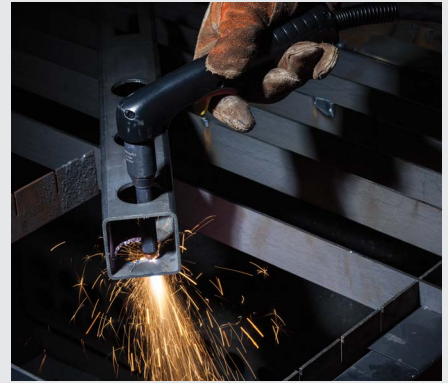
851479 Powermax30 XP kit



### HyAccess consumable kit

Uniquely designed for accessibility, the patented HyAccess™ extended consumables provide the extra reach needed when cutting or gouging in hard to reach or confined spaces.

428337 HyAccess consumable kit



## Recommended Hypertherm genuine accessories

| Part number   | Description   |
|---|---|
| Face Shield: Clear face shield with flip-up shade for cutting and grinding. Safety shield included. ANSI Z87.1, CSA Z94.3, CE.  |   |
| 127239  | Face shield shade 6   |
| 127103  | Face shield shade 8   |
| Circle cutting guides: Quick and easy set up for accurate circles up to 70 cm (28") diameter. For optional use as a stand-off guide for straight and bevel cuts. Made in USA. |   |
| 127102  | Basic kit - 38 cm (15") arm, wheels and pivot pin                             |
| 027668  | Deluxe kit - 28 cm (11") arm, wheels, pivot pin, anchor base and plastic case |
| Flip-up eyeshades: Shade 5 (for <40 A) flip-up shade, anti-scratch lens and adjustable frame. ANSI Z87.1, CSA Z94.3, CE.  |   |
| 017033  | Flip-up eyeshades   |
| System dust covers: Made from a flame-retardant vinyl, a dust cover will protect your Powermax system for years. Made in USA.   |   |
| 127144  | Cover, Powermax30 XP  |

## Accessories



Face shield



Flip-up eyeshades



System dust covers



Circle cutting guides

Learn more at [www.hypertherm.com/powermax30XP](http://www.hypertherm.com/powermax30XP)

Unless otherwise noted in the collateral, all trademarks are property of Hypertherm, Inc. and may be registered in the United States and/or other countries.

Please visit [www.hypertherm.com/patents](http://www.hypertherm.com/patents) for more details about Hypertherm Associates patent numbers and types.

© 09/2025 Hypertherm, Inc. Revision 7

860450

As 100% Associate owners, we are all focused on delivering a superior customer experience. [www.hyperthermassociates.com/ownership](http://www.hyperthermassociates.com/ownership)

Environmental stewardship is one of Hypertherm Associates' core values. [www.hyperthermassociates.com/environment](http://www.hyperthermassociates.com/environment)

100% Associate-owned

