

Powermax30 AIR

Recommended cut capacity of 8 mm (5/16")

Severance capacity of 16 mm (5/8")

Professional grade



Part of the Powermax® family, the Powermax30 AIR is highly portable, features a built-in air compressor, and enables hand cutting anywhere there's single-phase power.

Key business benefits

Increase application capability

Built-in compressor enables plasma cutting in locations where air is unavailable or air quality is poor

Lower operating costs

Long consumable life and a built-in compressor decrease operating costs

High uptime and reliability

Robust design and long-lasting consumables ensure system durability and long life

Powermax30 AIR. Small size. Big performance.

The smallest and lightest handheld plasma cutter in its class, the Powermax30 AIR includes a built-in air compressor and dual-voltage design. It runs on a 240 V circuit and, depending on the region, a 120 V circuit.

Powermax30 AIR cut capacities

Cut capacity	Thickness	Cut speed
Recommended	8 mm (5/16")	500 mm/min (20 ipm)
	10 mm (3/8")	250 mm/min (10 ipm)
Severance	16 mm (5/8")	125 mm/min (5 ipm)

Torch output**	2.49 kW
	30 A x 83 V ÷ 1000 W = 2.49 kW

**Higher output voltage at the torch plus efficiently designed consumables result in a faster, cleaner cut.

“Because our company provides service in very remote places where access to air compressors is very limited, the portability of the Powermax30 AIR with the internal compressor, makes it ideal for field services.”

Diego Nunes Fernando, BNG Metalmecânica, Brazil

**THE BEST
INVESTMENT
IS IN YOUR
POWER**



Highlighted product features:

Easy to use

- Simplified operations get you cutting quickly and easily
- Small and lightweight, the Powermax30 AIR delivers whenever and wherever you need it
- Quickly cut metal grate or rusted metal without retriggering with the continuous pilot arc feature

Versatile

- Plug into any 120 or 240 V circuit (convenient Auto-Voltage™ technology and plug adapters included)
- Two-in-one design for maximum versatility with high power for thicker metals and FineCut® consumables for high-quality cuts on thinner metals

Industry-leading reliability

- Powermax plasma cutters are known to last decades in the field, minimizing maintenance and downtime
- Torches are engineered for rugged industrial environments
- Each Powermax component is tested to perform reliably in demanding conditions

Our customers' preferred cutting tool for industries including:

- Automotive repair/restoration
- Metal art and signage
- Property/plant maintenance
- HVAC/mechanical contracting
- Educational/trade schools
- Agricultural/equipment maintenance

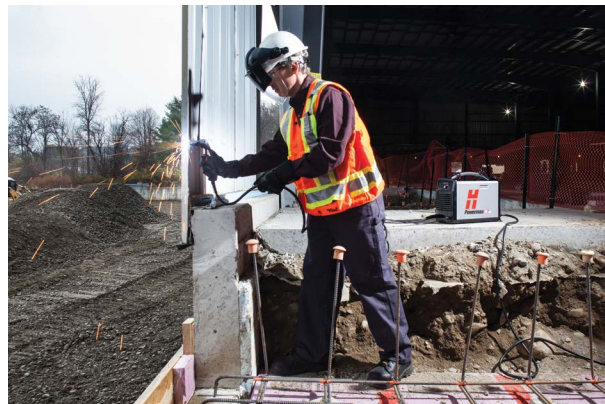
Specifications

CE – for use in Europe, Australia & New Zealand - RCM, Serbia, UK - UKCA, Ukraine, and other countries where accepted.

CCC – for use in China

CSA – for use in the Americas and Asia, except China

CE	CCC	CSA	Specifications
Input voltages (± 10%)			
↳	↳	↳	200–240 V, 1-PH, 50/60 Hz
Input current @ 2.5 kW			
↳	↳	↳	120–240 V, 1-PH, 29–15 A
Output current			15–30 A
Rated output voltage			83 VDC
Duty cycle @ 40° C (104° F)			
↳	↳	↳	35%, 240 V
↳	↳	↳	20%, 120 V
Open circuit voltage (OCV)			
↳	↳	↳	256 VDC
Dimensions with handles			420 mm (16.5") D; 195 mm (7.7") W; 333 mm (13.1") H
Weight with 6.1 m (20') torch			
↳	↳	↳	13.5 kg (29.8 lbs)
Input power cable length			3 m (10')
Power supply type			Inverter – IGBT
Engine drive requirement			5.5 kW for full 30 A output
Warranty			Power supply: 3-year, Torch: 1-year

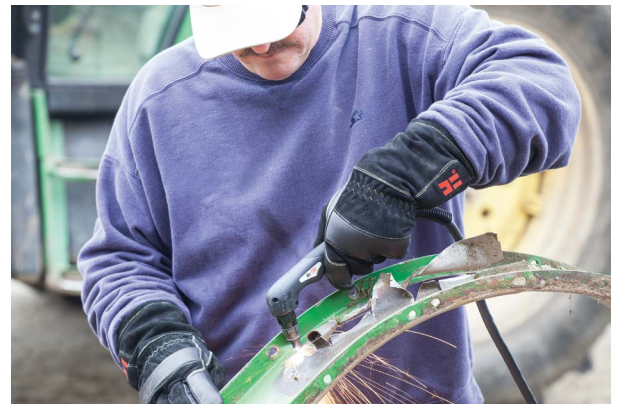


Ordering information

Below are the standard system configurations, which include a power supply, torch, and work cable.

CE – for use in Europe, Australia & New Zealand - RCM, Serbia, UK - UKCA, Ukraine, and other countries where accepted.			Torch lead length	4.5 m (15')
CCC – for use in China				
CSA – for use in the Americas and Asia, except China				
CE	CCC	CSA		

Powermax30 AIR® power supplies		Handheld
	↳ 120-240 V standard power supply	088096
↳	120-240 V standard power supply	088103
↳	120-240 V standard power supply	088098



Torch consumable parts

Consumable type	Torch type	Amperage	Shield/Deflector	Retaining cap	Nozzle	Swirl ring	Electrode
Standard	Hand	30	420399	420135	420134	420133	420132

Electrodes and nozzles are sold in packs of five, as well as combination packs of 2 electrodes and 2 nozzles (part number 428350)



Recommended Hypertherm genuine accessories

Part number	Description
Face Shield: Clear face shield with flip-up shade for cutting and grinding. Safety shield included. ANSI Z87.1, CSA Z94.3, CE.	
127239	Face shield shade 6
127103	Face shield shade 8
Circle cutting guides: Quick and easy set up for accurate circles up to 70 cm (28") diameter. For optional use as a stand-off guide for straight and bevel cuts. Made in USA.	
127102	Basic kit—38 cm (15") arm, wheels and pivot pin
027668	Deluxe kit— 28 cm (11") arm, wheels, pivot pin, anchor base and plastic case
Flip-up eyeshades: Shade 5 (for <40 A) flip-up shade, anti-scratch lens and adjustable frame. ANSI Z87.1, CSA Z94.3, CE.	
017033	Flip-up eyeshades
System dust covers: Made from a flame-retardant vinyl, a dust cover will protect your Powermax® system for years. Made in USA.	
127469	Cover, Powermax30 AIR

Accessories



Face shield

Flip-up eyeshades

System dust covers

Circle cutting guides

Learn more at www.hypertherm.com/powermax30 AIR

Unless otherwise noted in the collateral, all trademarks are property of Hypertherm, Inc. and may be registered in the United States and/or other countries.

Please visit www.hypertherm.com/patents for more details about Hypertherm Associates patent numbers and types.

© 4/2024 Hypertherm, Inc. Revision 4

860620

As 100% Associate owners, we are all focused on delivering a superior customer experience. www.hyperthermassociates.com/ownership

Environmental stewardship is one of Hypertherm Associates' core values. www.hyperthermassociates.com/environment

100% Associate-owned

