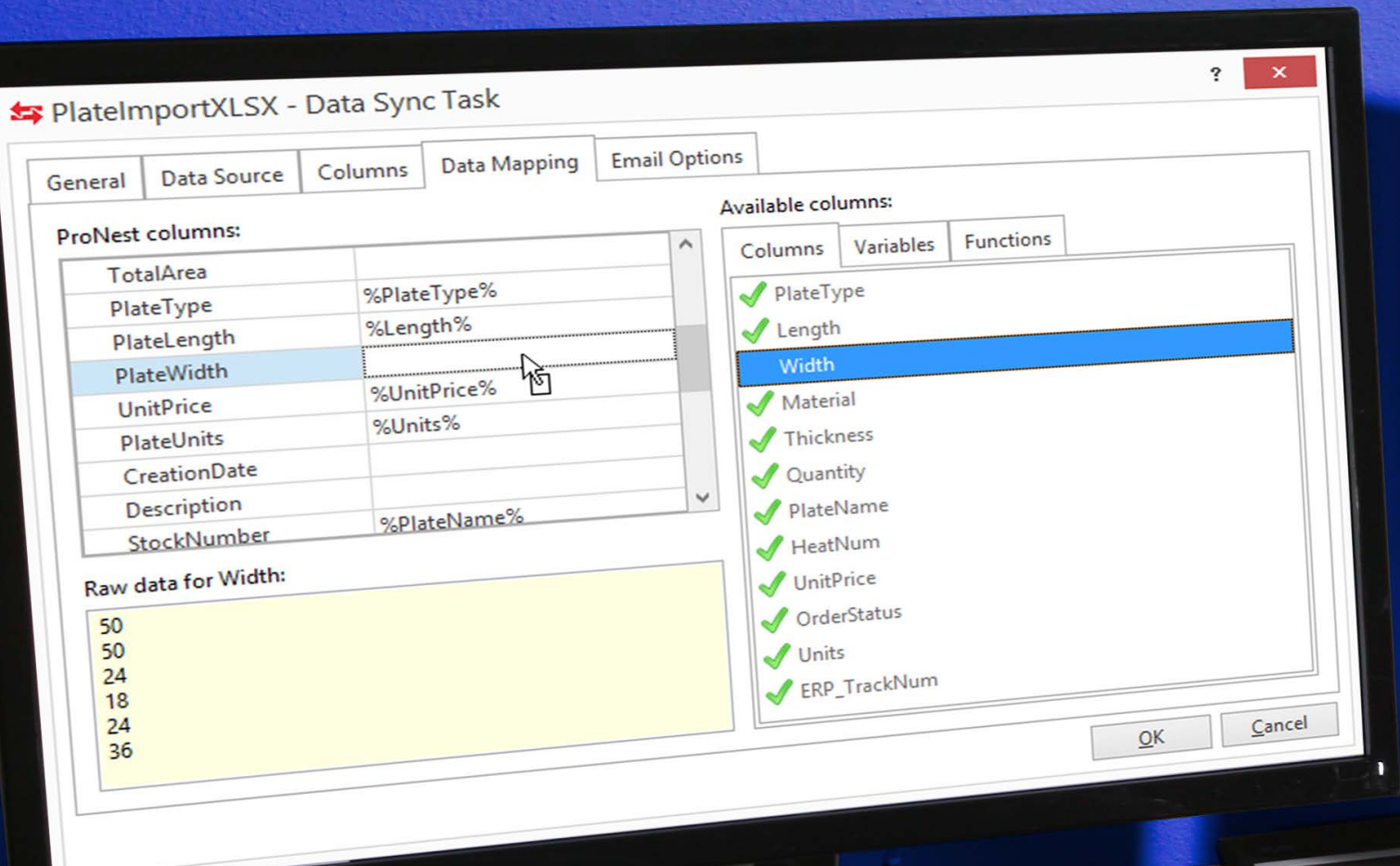


# Data Sync

ProNest optional module



Enterprise modules



## Benefits

- Seamless integration to ERP/MRP/MES\* system
- Data accuracy across all applications
- Continuous feedback loop of information

## About

The Data Sync module links ProNest<sup>®</sup> nesting software to your ERP/MRP/MES system, providing the communication framework needed to exchange job information (such as parts and plates) in real time.

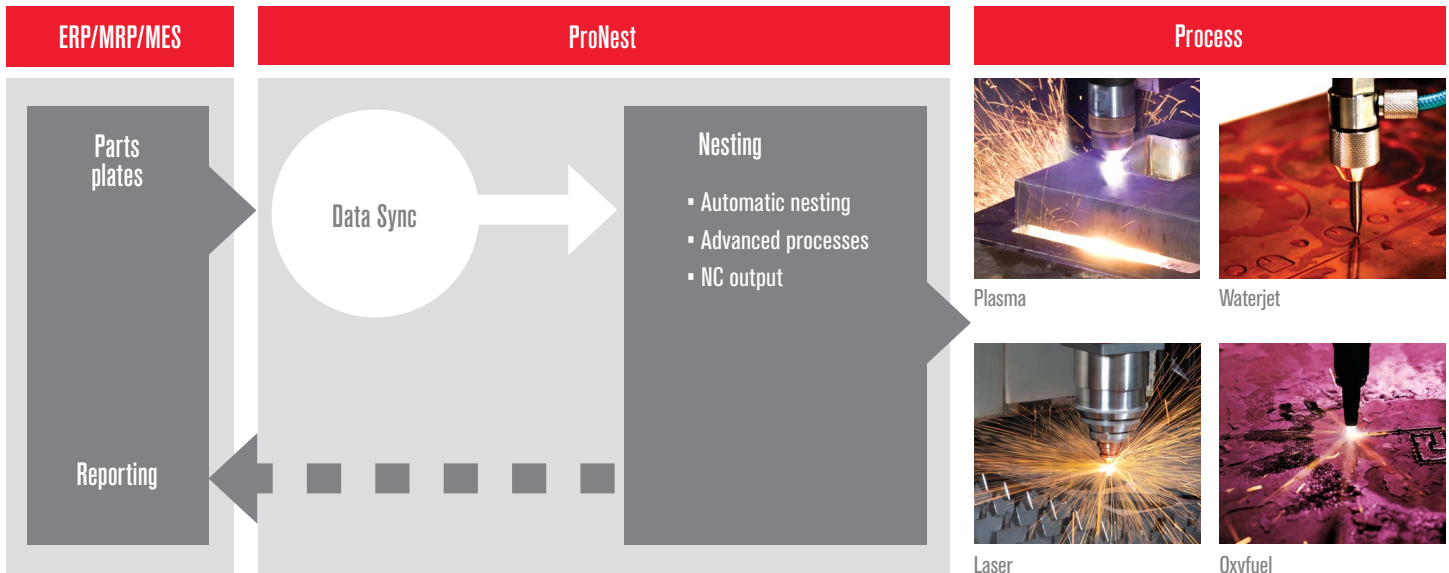
Data Sync is required for all ProNest integrations with third-party ERP/MRP/MES software.

\*Enterprise Resource Planning / Manufacturing Resource Planning / Manufacturing Execution System

## Here is what people are saying about Data Sync:

“It took a large burden away from the programming process. What used to take four hours to complete now takes only 20 minutes.”

– Rick Kirkpatrick, Top Tier, Inc.



## How it works

There are many ways to configure the Data Sync module and it works with virtually any brand of ERP/MRP/MES software, including steel fabrication management software.

Once activated, Data Sync allows ProNest users to automatically access ERP/MRP/MES data directly inside the part list or plate list for immediate nesting. Updated data can then be returned to the ERP/MRP/MES system for enhanced collaboration across the organization.

Depending on your brand of ERP/MRP/MES software, Data Sync may provide all the functionality that you need to run a fully data driven operation. In other cases, additional ProNest modules may be recommended to help drive your business efficiency. These may include Plate Inventory and Work Order Processing.

To determine the right combination of modules for your particular integration, please contact your Hypertherm representative.

### Consider including other Enterprise modules to further improve your operation:

- Work Order Processing
- Plate Inventory
- Production Manager

Visit our website to request a demo:  
[www.hypertherm.com/CAM](http://www.hypertherm.com/CAM)

ProNest is a trademark of Hypertherm, Inc. and may be registered in the United States and/or other countries. All other trademarks are the properties of their respective owners.

Please visit [www.hypertherm.com/patents](http://www.hypertherm.com/patents) for more details about Hypertherm Associates patent numbers and types.

© 8/2023 Hypertherm, Inc. Revision 1  
 896960



As 100% Associate owners, we are all focused on delivering a superior customer experience.  
[www.hyperthermassociates.com/ownership](http://www.hyperthermassociates.com/ownership)

Environmental stewardship is one of Hypertherm Associates' core values. [www.hyperthermassociates.com/environment](http://www.hyperthermassociates.com/environment)

100% Associate-owned

