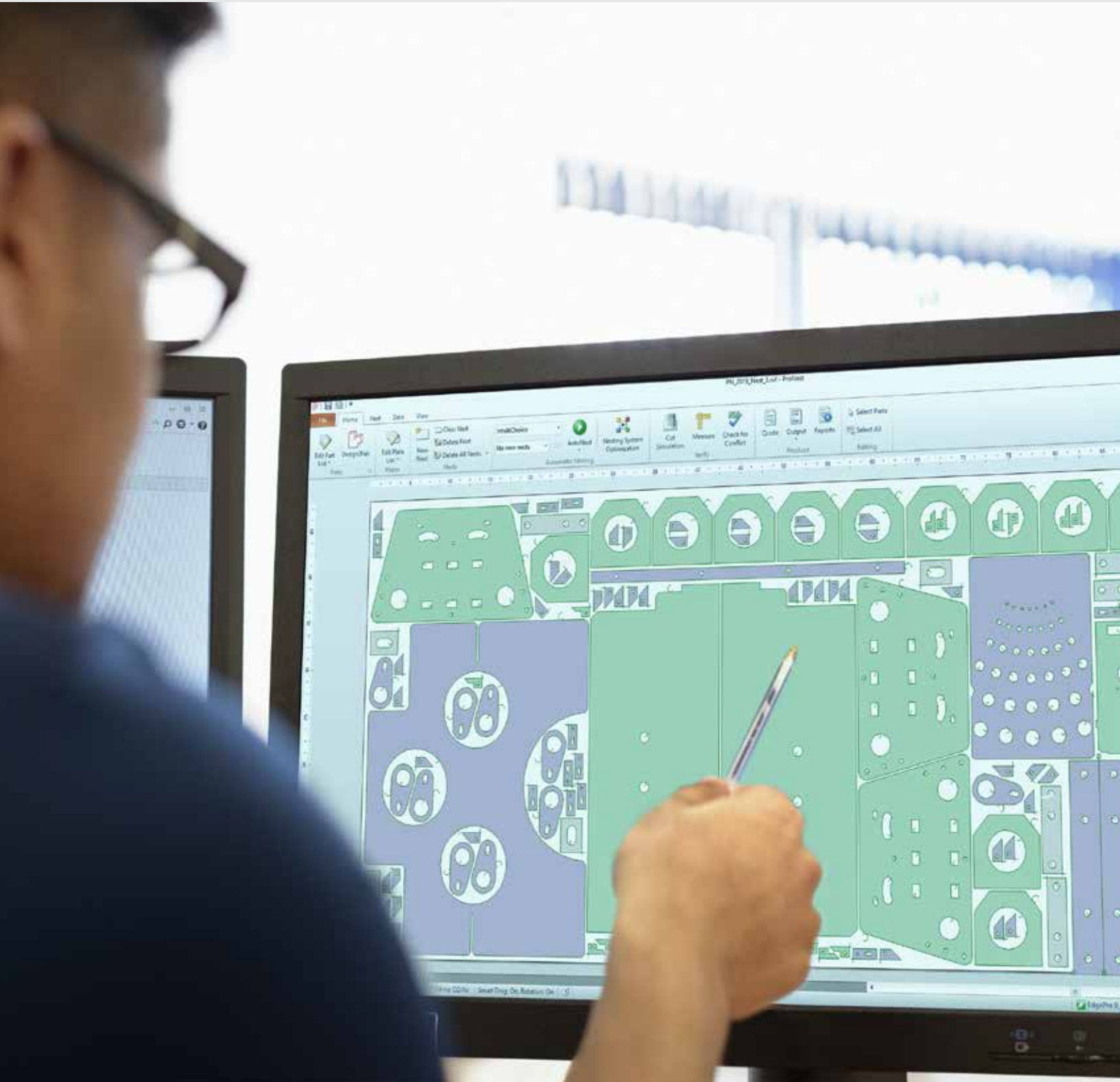


CAD/CAM software family

Hypertherm Associates
Software Group

Nesting, tube and pipe, sheet metal layout





Contents

4	The Hypertherm Associates CAD/CAM difference
5	Accomplish more with ProNest®
8	The CAD/CAM software family
10	ProNest product comparison summary
11	ProNest LT subscription plans
12	Rotary Tube Pro™
13	Design2Fab®
15	The Hypertherm Associates corporate story



The Hypertherm Associates CAD/CAM difference

Are you getting the most out of your cutting operation? Easy-to-use Hypertherm Associates CAD/CAM software for nesting, tube and pipe, and sheet metal layout can help you achieve greater automation, efficiency, and profitability. Over 50 years of cutting experience has gone into our product development, and our CAD/CAM software contains more built-in process expertise than any other brand.

ProNest®, our advanced CAD/CAM nesting software, automatically embeds this cut process expertise into the numeric code. Whether it's material type, thickness, or grade, ProNest is drawing on years of research and development to deliver the optimal adjustments including leads, separations, kerf, and feedrate. ProNest is also the only software with full support for Hypertherm SureCut™ technologies like True Hole®, Rapid Part™, and Plate Saver™, which are delivered automatically without operator intervention, and True Bevel™ which greatly reduces bevel set up time.

Rotary Tube Pro™ provides a complete design and cut solution for tube and pipe parts with no 3D CAD experience required. And Design2Fab® provides a simple, yet powerful interface for sheet metal layout, including HVAC, and other applications.



Accomplish more with ProNest

ProNest® is an industry leading CAD/CAM nesting software designed for advanced mechanized cutting. It provides a single solution for all of your profile cutting needs, including plasma, laser, waterjet, and oxyfuel.

ProNest offers all of the standard features you'll need to complete your jobs, plus optional modules for more advanced functionality.

Users agree this powerful software is incredibly easy to learn and use. Your team will be up and running faster, and completing jobs more quickly.

ProNest workflow... customizable to meet your needs



Are you maximizing your results?

ProNest® helps fabricators, manufacturers, and metal service centers achieve better results. Here are some of the ways ProNest can impact your business.

Better part quality



"True Hole improves the look and quality of our products, and ProNest makes it easy."

- T&J Manufacturing

Increased material utilization



"With ProNest we've increased material utilization by 5%, which translates to \$50,000 annually."

- Construction Products Inc.

Faster programming



"Jobs that used to take 8 hours to program now take 5 to 10 minutes with ProNest."

- Creative Edge Master Shop

Single software solution



"ProNest allows me to program eight different machines which has more than doubled our programming productivity."

- Olympic Steel Inc.

Applications supported

Regardless of which cut process, application, machine format, brand, or model you're using, Hypertherm has the solution for you.

Plasma



Laser



Waterjet



Oxyfuel



Bevel



Drill



Plate



Reposition



Rotary pipe/tube



ProNest® is the only software that offers full support for SureCut technology, including:

True Hole®



Rapid Part™



Plate Saver™



True Bevel™



The CAD/CAM software family

Hypertherm Associates offers several CAD/CAM software products designed to drive your machines and improve your business productivity and profitability.



ProNest®

Nesting software for advanced mechanized cutting in enterprise and production environments.



ProNest® LT

Nesting software for light industrial mechanized cutting in production environments.



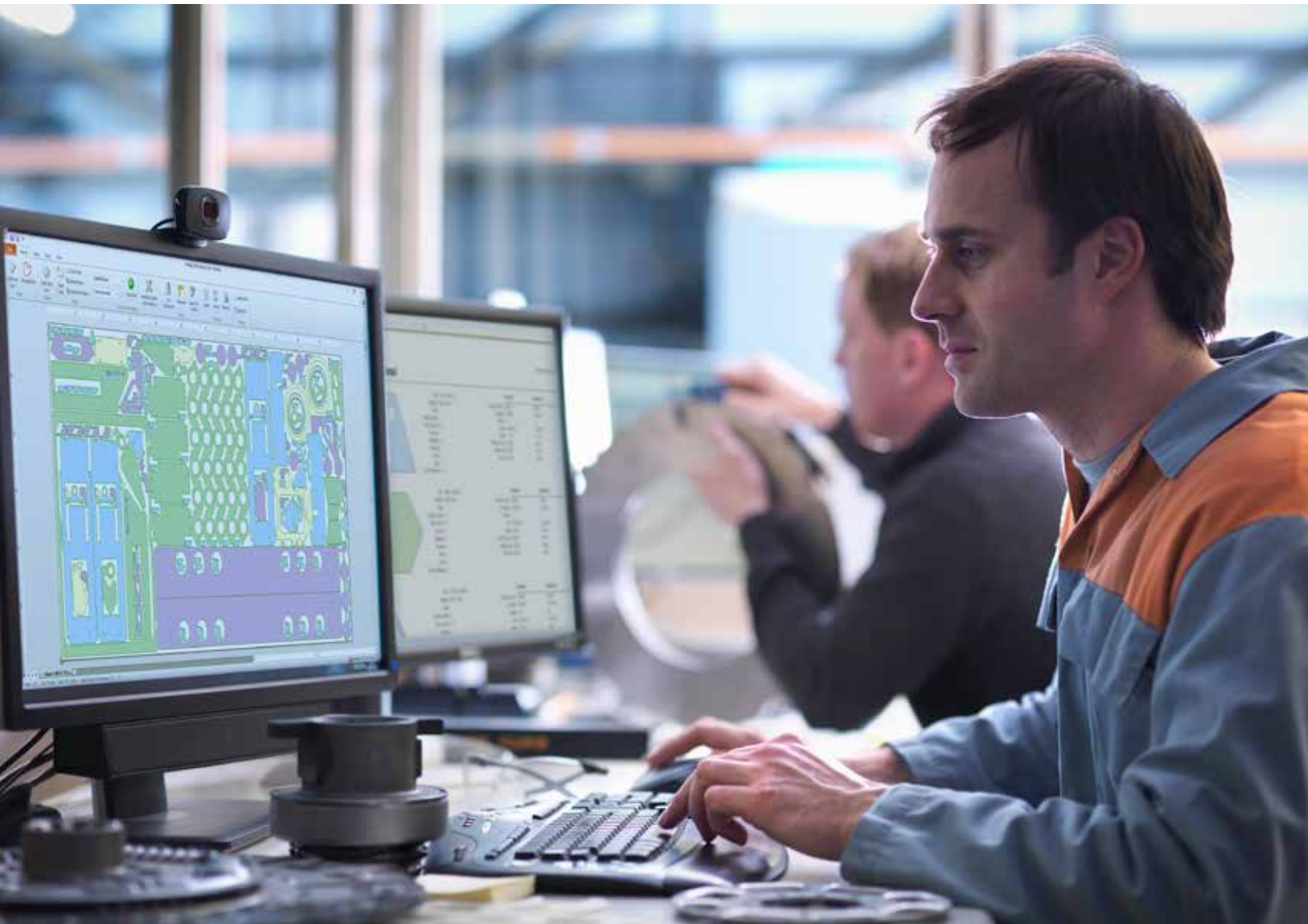
Rotary Tube Pro™

Pipe and tube cutting software for stand-alone tube cutting machines or cutting table add-ons.



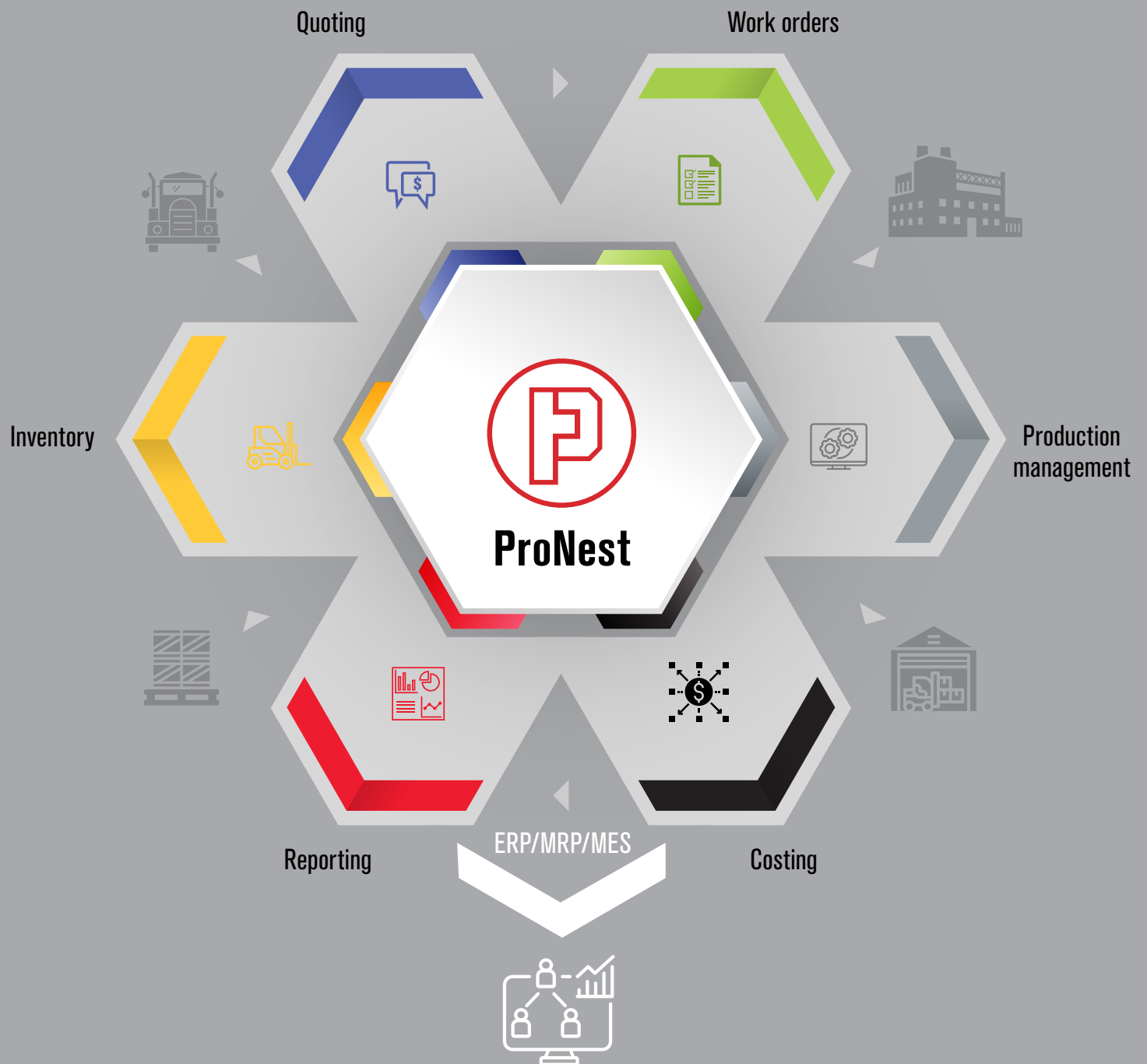
Design2Fab®

Sheet metal layout software for HVAC, duct work, mechanical, kitchen, industrial, roofing, and more.



Beyond nesting

ProNest® not only drives your machines, it is also a key component of your entire cutting and fabricating ecosystem, going from quoting to reporting, and everything in between. ProNest also connects to ERP/MRP/MES for real time data exchange.



ProNest product comparison summary

The following guide illustrates the basic differences between levels. For more detailed feature information, please visit www.hypertherm.com/CAM.

Key features legend

- Advanced
- Intermediate

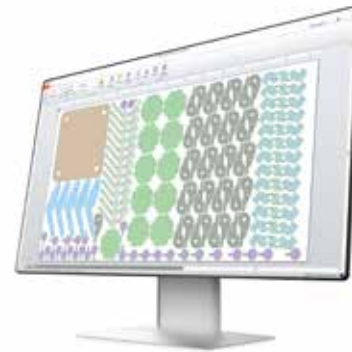
	ProNest®	ProNest LT
Machine support		
All major brands	●	●
Cut process support		
Plasma – conventional air / oxygen (ex. Powermax®, MAXPRO®)	●	●
Plasma – high definition (ex. XPR®, HyPerformance®)	●	
Laser	●	
Waterjet	●	●
Oxyfuel	●	●
Standard features		
Part design	●	●
CAD import	●	●
Manual nesting	●	○
Reporting	●	○
Costing	●	○
Quoting	●	
A single job can contain sheets for different material types, thicknesses, and classes	●	
SureCut™ technology		
True Hole® technology capable*	●	
Rapid Part™ technology capable*	●	
Plate Saver™ technology capable*	●	
True Bevel™ technology capable*	●	
Advanced process support and job set up on the CNC*	●	
Module highlights		
Automatic Nesting	●	○
Productivity modules	●	○
Enterprise modules (including ERP/MRP/MES integration)	●	
3D CAD modules	●	

*Certain hardware and software requirements may apply.

ProNest LT subscription plans

Software subscriptions are now available at the ProNest LT level with a variety of options to meet your needs.

Software subscriptions offer a lower up-front cost, with no capital expenditure compared to traditional software solutions. They provide the flexibility to add or remove licenses and features as business conditions change. Also, subscriptions ensure that you always have access to the latest software technology, and unlimited access to training and technical support.



ProNest® LT subscription plans

Unlimited technical support, training, and updates included in all plans

Features	Smart Start	Essentials	Unlimited	OMAX	Waterjet Plus
Conventional plasma cutting	●	●	●		●
Oxyfuel cutting	●	●	●		●
Conventional waterjet cutting				●	●
All standard features	●	●	●	●	●
All standard post processors	●	●	●	● (OMAX only)	● (Up to 3 posts, any machine) make or model
2D CAD	●	●	●	●	●
Automatic nesting		●	●	●	●
Common line cutting			●	●	●
Chain and bridge cutting			●	●	●
Skeleton cut-up			●	●	●



Rotary Tube Pro

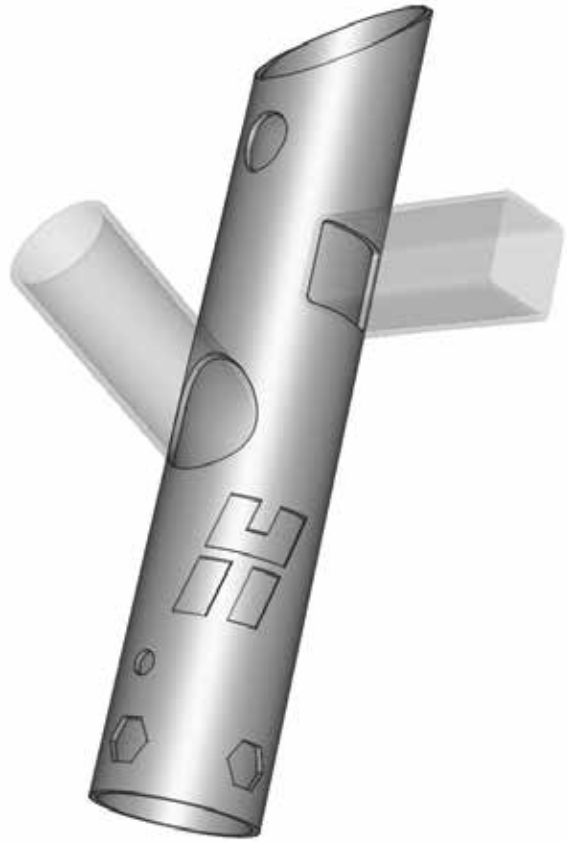
An easier way to design and cut tubes

Rotary Tube Pro™ offers a complete design and cut solution for tube and pipe parts in mechanized cutting applications including plasma, laser, waterjet, and oxyfuel. There is no 3D CAD experience required. Tubes and branches are easily created using parametric input. Side-wall cut outs can be selected from a list of pre-defined shapes, or added from CAD. And, if necessary, users can import 3D CAD files. This flexibility allows fabricators and manufacturers to work more efficiently, boost productivity, and reduce operating costs.

In addition, Rotary Tube Pro supports virtually all brands of tube cutting machine, including stand-alone units and cutting table add-ons. It supports perpendicular cutting as a standard feature and bevel cutting as an optional module.

Standard feature highlights:

- Machine support for all major brands
- Cut process support for plasma, laser, waterjet, and oxyfuel
- Part creation and development
- Automatic nesting
- Common line cutting
- SureCut™ technology capable including True Hole®
- Reporting with detailed job information
- Simplified costing
- Output with advanced post-processor
- Bevel cutting option



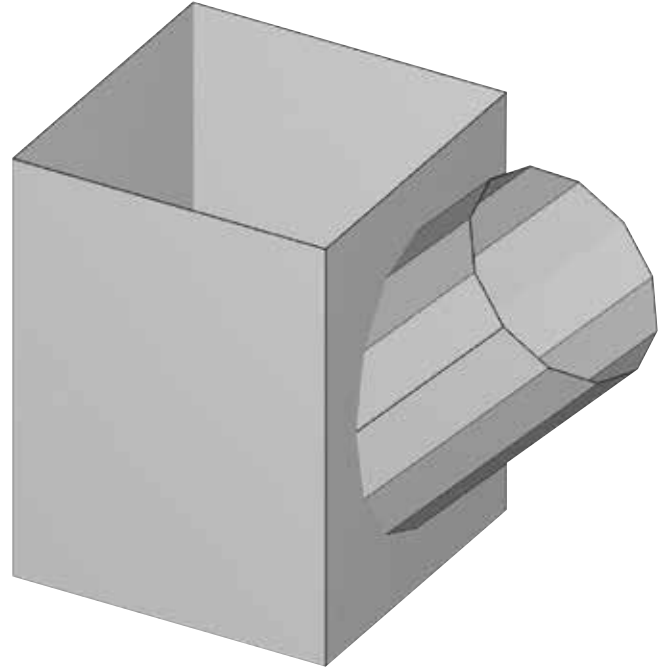
Design2Fab

Sheet metal layout made fast and efficient

Design2Fab® sheet metal layout software makes it easy to create HVAC duct, mechanical, kitchen, industrial, roofing, and other specialty fitting layouts. Engineered to dramatically reduce the time it takes to develop and lay out flat patterns, Design2Fab provides sheet metal fabricators, HVAC shops, and MEP contractors with the ability to create complex custom fitting layouts in minutes, rather than hours. Design2Fab also helps ensure perfect fit-up when installing parts in the field, contributing to increased productivity and lower operating costs so you'll be able to accomplish more, while increasing profitability!

Standard feature highlights:

- Comprehensive fittings library with unlimited customization
- 3D view verification of fittings
- 2D layout view of pattern fitting
- Copy fitting or zone
- Apply SMACNA or DIN standards
- DXF export for nesting and automated cutting
- HPGL export for printing and manual cutting





Constancy
of purpose

Drive to
innovate

Passion for
customer
success

The Hypertherm Associates corporate story

Hypertherm. OMAX. Centricut. ProNest. AccuStream, Robotmaster. These names and more represent the world's leading industrial cutting technologies and solutions, and they can all be found in one company: Hypertherm Associates. With constancy of purpose, a drive to innovate, and a passion for customer success, Hypertherm Associates is leading the industrial cutting and shaping industry.

Shaping Possibility

Since the founding of Hypertherm in 1968, we have always believed in the value of surpassing expectations. It's why we make continued investments in people. It's why we invest aggressively in ongoing product development. And now, it's why we'll be known as Hypertherm Associates: a 100% Associate-owned company composed of the world-class industrial cutting technologies and solutions you know and trust—plasma, waterjet, CAD-CAM, robotic software, and more—to help our customers succeed in ways that have never before been possible.

Hypertherm Associates builds on our legacy of challenging what's achievable with the products we create, the culture we foster, and the experience we deliver to our customers—and then goes further. Whether plasma, waterjet, or the consumables, software, and services that enable connected factories and optimized performance, the solutions that help our customers meet their business objectives can all be found in one place: Hypertherm Associates.

Committing to Success

Behind the name Hypertherm Associates lies a fundamental commitment to the success of people: our customers, partners, our Associates, and communities. Our dedication to 100% Associate ownership is a direct result of that commitment. By maintaining complete independence from external shareholders or other corporate entities, we can focus on our customers and partners to deliver exactly what they need. And because our Associates work together moving toward a common goal, they are an energized workforce dedicated to delivering a consistently superior customer experience.

Leading the Industry

From aerospace to agriculture and energy to infrastructure, the people, brands, and technologies of Hypertherm Associates can already be found everywhere advanced manufacturing is happening around the globe. In fact, hundreds of thousands of businesses are relying on Hypertherm Associates technologies and solutions right now for performance and reliability that help increase their productivity and profitability. And that's why companies worldwide turn to Hypertherm Associates to build ships, airplanes, and railcars, to construct steel buildings and bridges, to fabricate heavy equipment and wind turbines, and a whole lot more.

Through our portfolio of technologies and solutions, Hypertherm Associates employs more than 1,900 people and maintains operations and partner representation globally. With Hypertherm Associates, we've created a framework for growth and expansion that will allow us to bring the latest innovations to our customers more quickly, and with a deeper level of integration and customer support.

Hypertherm Associates is the evolution of a vision that continues to put our customers first, to solve their challenges, and to make it even easier to do business with us. Our global team is committed to continuously finding ways to make our company, our customers, and our communities more successful, and we're excited to have you with us as we continue our journey of shaping possibility.

SHAPING POSSIBILITY®

PLASMA | LASER | WATERJET | AUTOMATION | SOFTWARE | CONSUMABLES

Request a free trial at: www.hypertherm.com/CAM

Hypertherm, ProNest, SureCut, True Hole, Rapid Part, Plate Saver, True Bevel, Rotary Tube Pro, Design2Fab, Powermax, MAXPRO, XPR, and HyPerformance are trademarks of Hypertherm, Inc. and may be registered in the United States and/or other countries. All other trademarks are the property of their respective owners.

Please visit www.hypertherm.com/patents for more details about Hypertherm Associates patent numbers and types.

© 4/2024 Hypertherm, Inc. Revision 10
896970



**HYPERTHERM
ASSOCIATES™**

As 100% Associate owners, we are all focused on delivering a superior customer experience. www.hyperthermassociates.com/ownership

Environmental stewardship is one of Hypertherm Associates' core values. www.hyperthermassociates.com/environment

100% Associate-owned

