

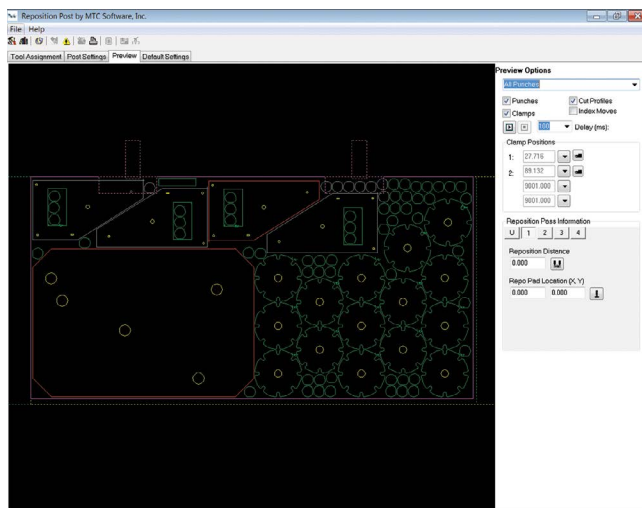
Reposition Machine Interface

ProNest® optional module

Benefits:

- Better productivity
- Faster programming
- Easier machine operation

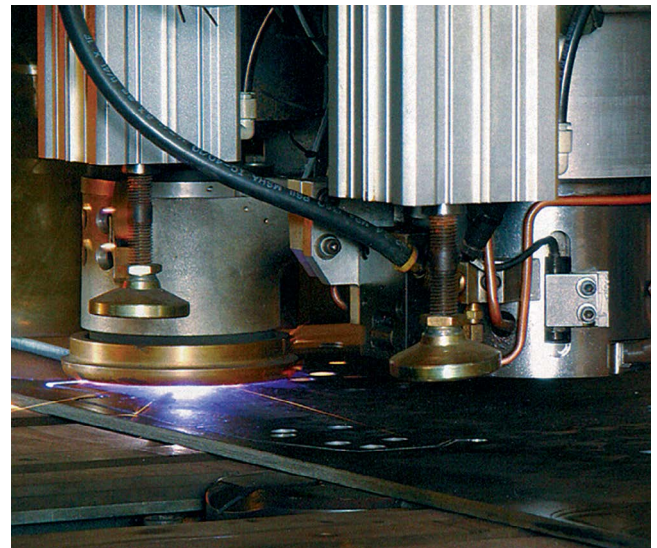
The Reposition Machine Interface provides seamless support for combination punch machines (including punch/plasma and punch/laser) and standard laser reposition tables.



Features include:

Tooling management

- Material type, thickness, grade and class-based process parameters including advanced kerf and feedrate commands, corner loops, corner radiusing, piercing, etc.
- Automatic tool recognition (including non-conventional punches like louvres)
- Automatic error checking for tool over-tonnage and tool diameter problems
- Tooling report for the operator that shows tool loading information, suggested die sizes, and production time estimates



Reposition management

- Automatic and manual clamp positioning
- Automatic trap/drop door utilization (including “slide moves”)
- Support for plate and part loading and unloading systems

Part and tool path management

- Part processing options (including part-by-part and first part inspection)
- Punch sequencing (automatic or manual)
- Ability to use plate rotation during sequencing
- Automatic pre-punch pierce location and lead-in adjustment for plasma cutting
- Automatically determines pre-punch used for shaving holes
- Manual and automatic splitting of long profiles
- Process sheared-to-size parts

Visit our website www.hypertherm.com/CAM to request a free production trial.

Hypertherm and ProNest are trademarks of Hypertherm Inc. and may be registered in the United States and/or other countries. All other trademarks are the property of their respective owners.

One of Hypertherm's long-standing core values is a focus on minimizing our impact on the environment. Doing so is critical to our, and our customers' success. We are always striving to become better environmental stewards; it is a process we care deeply about.