



Cartridge consumable recycling

General guidance



DO NOT

Throw cartridges and the valuable information they contain into the trash. This will bring pollution to landfills and waterways, rather than bring value to your operation.

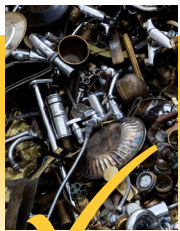
AT THE VERY LEAST

Recycle on your own

Continue to follow your current metal scrapping/recycle process for cartridges until Hypertherm's "Return to Recycle" program is extended outside of the United States.

Collect used cartridges in your normal copper/brass recycling container.

Remember, cartridge consumables for Powermax SYNC® systems are 65% copper and 20% brass by weight, and classified as "Drink, Droid, or Drove" material. Be sure to discuss this with your scrap vendor to ensure you are fairly reimbursed!



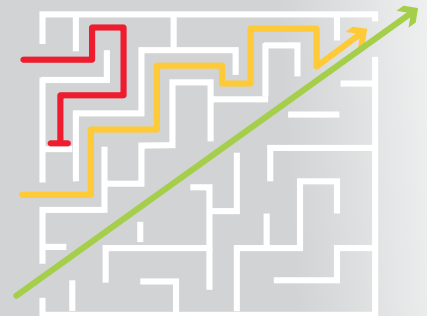
BEST OF ALL

Recycle 100% with Hypertherm – currently testing in US only*

This program keeps waste out of landfills and waterways, and provides you with optional usage reports on your cartridge consumables.

Steps

- Box up 20-40 lbs. of used cartridge consumables.
- Go to this webpage: www.hypertherm.com/ReturnToRecycle or scan this QR code to request your prepaid shipping label.
- Label your box and drop off with UPS, or call them for a pickup.
- Hypertherm will analyze and recycle 100% of your cartridges, and provide you with valuable usage data if you indicate that you would like a report for your cartridges that have data written to them.



*Currently testing in US only

