

What's New

Major new features and changes in ProNest 2023 LT. For a complete version history, please visit the [online knowledge base](#).

ProNest 2023 LT v15.0.0

- Welcome screen

- Customize the ribbon

ProNest 2021 LT v14.2

- Intentional open profiles

- Edit Part List speed improvement

- Drag and drop to import parts

- DSTV powder marking

- Outline parts by profile type

- Quality enhancements

ProNest 2023 LT v15.0.0

Released May 2022

USER INTERFACE

Welcome screen

When starting up ProNest 2023, you are greeted with a new welcome screen that highlights training videos, tips, and other resources. An internet connection is required to watch training videos.

Customize the ribbon

The ribbon area in ProNest—Home, Nest, Data, and View tabs—can be customized by adding, removing, and rearranging non-default buttons. In addition to the four standard tabs, custom tabs may be added. You can save different ribbon configurations and easily switch between them as needed, to best fit your workflow.

ProNest 2021 LT v14.2

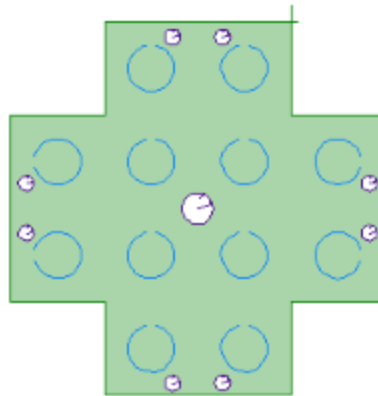
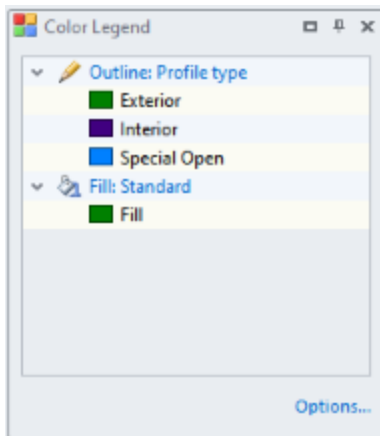
v14.1.1–v14.2.0

CAD IMPORT

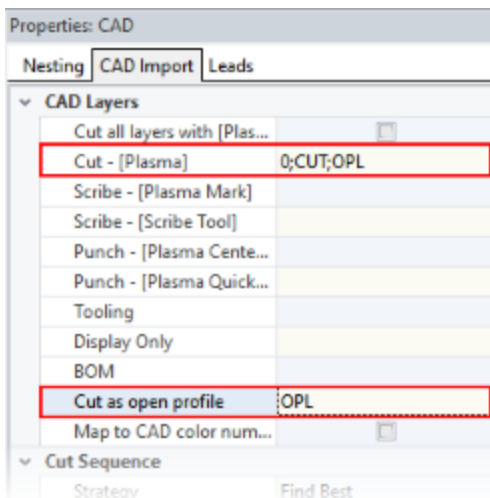
Intentional open profiles

When importing a part, you can use the "Cut as open profile" CAD layer mapping option to treat profiles on that layer as intentional open profiles in ProNest, which does the following:

- Does not apply kerf compensation
- Does not apply leads
- Does not display open profile warnings



Any layers mapped to Cut as open profile must also be mapped to a cut process.



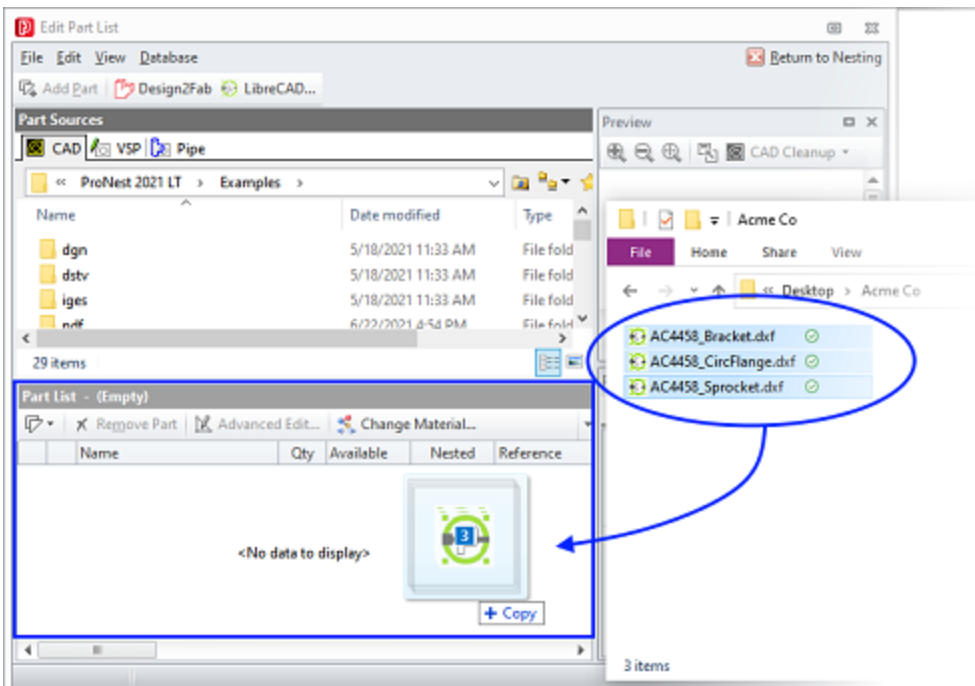
Note that profiles can be mapped to Cut as open profile, even if they are actually closed profiles. This feature is designed for interior profiles.

Edit Part List speed improvement

Navigating to CAD files and folders in the Edit Part List Part Sources area is significantly faster, particularly when navigating through network folders.

Drag and drop to import parts

You can drag and drop parts from your desktop or Windows file explorer directly into the Part List area of the Edit Part List window. This quick and convenient way to import parts is a helpful way to save time navigating through folders in the Part Sources area. Drag and drop import is recommended only for parts that have already been processed (such as token files) and for parts with import properties that don't need to be adjusted.



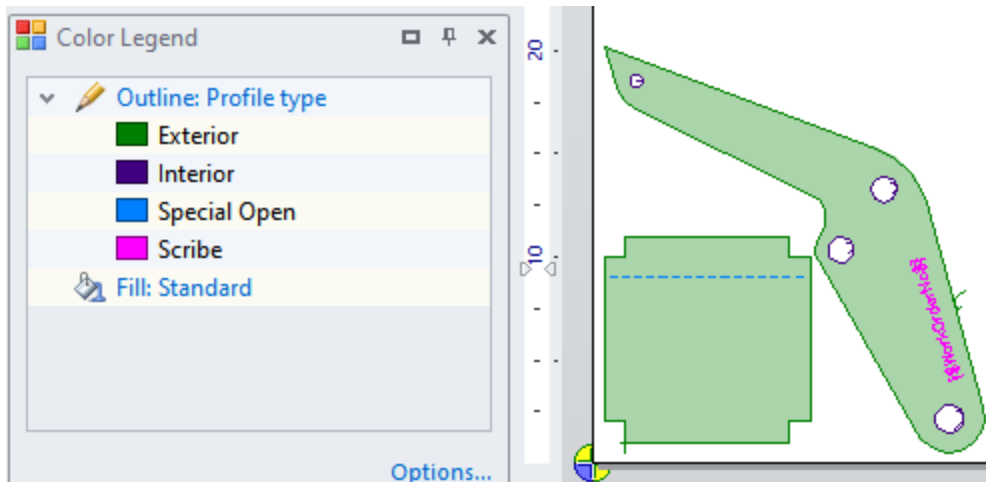
DSTV powder marking

For powder marking, the PU bloc can now be mapped to the Scribe or Mark process of a ProNest machine.

DISPLAY

Outline parts by profile type

Profile type is an outline option in the Color Legend. Using the Profile type outline option, part profiles are identified as Exterior, Interior, Open, Special Open, Scribe, Punch, or Drill. Profiles mapped both to the Cut as open profile layer mapping option and a cut process are identified as Special Open.



QUALITY

Quality enhancements

- Outline parts by quality to easily identify quality colors.
- Apply quality to CAD files during import. A default quality value may be specified in Settings > Importing Parts.
- Quality defined in OMAX files (.omx and .ord) are applied to the part during import. In ProNest LT, the default quality color number scheme matches the default found in the OMAX LAYOUT software.

Please contact Hypertherm for an updated post processor if you'd like to use this feature.

What's New in ProNest LT

© 8/2022 Hypertherm, Inc. All rights reserved.

Hypertherm, ProNest, True Hole, SureCut, PlateSaver, XPR, and X-Definition are trademarks of Hypertherm, Inc. and may be registered in the United States and/or other countries. All other trademarks are the property of their respective owners.

Information in this document is subject to change without notice.

The software described in this document is furnished under a license agreement or nondisclosure agreement. The software may be used or copied only in accordance with the terms of those agreements. No part of this document may be reproduced, transmitted, transcribed, stored in a retrieval system or translated into any language or any form by any means without the written permission of Hypertherm, Inc.



www.hypertherm.com