

Powermax30 XP

Recommended cut capacity of 10 mm (3/8")

Severance capacity of 16 mm (5/8")

Professional grade



Part of the Powermax® family, the Powermax30 XP is a highly portable two-in-one plasma cutter providing high-power capability for mechanized cutting on thick metal and detailed, thin metal.

Key business benefits

Simplify operations and boost productivity

Easy-to-use interface and drag-cutting consumables reduce training time and improve cut quality

Minimize operating costs

Up to 10x longer consumable life compared to competitors decreases operating costs

High uptime and reliability

Robust design and long-lasting consumables ensure system durability and long life

Cut and gouge capacities

Capacity	Thickness	Cut speed
Cutting		
Recommended	10 mm (3/8")	500 mm/min (20 ipm)
	12 mm (1/2")	250 mm/min (10 ipm)
Severance	16 mm (5/8")	125 mm/min (5 ipm)

Torch output*	3.75 kW
	$30 \text{ A} \times 125 \text{ V} \div 1000 \text{ W} = 3.75 \text{ kW}$

*Higher output voltage at the torch plus efficiently designed consumables result in a faster, cleaner cut.

Portable and versatile.

Highly portable, the Powermax30 XP handles a wide range of jobs and provides high-power capability for thick metal cutting and FineCut® consumables for detailed, thin metal cutting. With a dual-voltage design, it can run on a 240 V circuit and, depending on the region, a 120 V circuit.

Unique “two-in-one” design provides high-power capability for thick metal cutting and FineCut consumables for detailed, thin metal cutting.

**THE BEST
INVESTMENT
IS IN YOUR
POWER**



Highlighted product features:

Easy to use

- Simplified operations get you cutting quickly and easily
- Small and lightweight, the Powermax30 XP delivers whenever and wherever you need it
- Quickly cut metal grate or rusted metal without retriggering with the continuous pilot arc feature

Versatile

- Plug into any 120 or 240 V circuit (convenient Auto-Voltage™ technology and plug adapters included)
- Two-in-one design for maximum versatility with high power for thicker metals and FineCut consumables for high-quality cuts on thinner metals

Industry-leading reliability

- Powermax plasma cutters are known to last decades in the field, minimizing maintenance and downtime
- Torches are engineered for rugged industrial environments

Each Powermax component is tested to perform reliably in demanding conditions

Our customers' preferred cutting tool for industries including:

- Automotive repair/restoration
- Metal art and signage
- Property/plant maintenance
- HVAC/mechanical contracting
- Educational/trade schools
- Agricultural/equipment maintenance

Specifications – CSA

Specifications – CE

Specifications – CCC

Input voltages (± 10%)	120-240 V, 1-PH, 50/60 Hz
Input current @ 3.8 kW	120-240 V, 1-PH, 25.5-18.8 A
Output current	15-30 A
Rated output voltage	125 VDC
Duty cycle @ 40° C (104° F)	35%, 240 V 20%, 120 V
Open circuit voltage (OCV)	256 VDC
Weight with 4.5 m (15') torch	9.5 kg (21.4 lbs)

CSA – for use in the Americas and Asia, except China.

CE – for use in Europe, Australia & New Zealand - RCM, Serbia, UK - UKCA, Ukraine, and other countries where accepted.

CCC – for use in China.

Dimensions with handles	356 mm (14.0") D; 140 mm (5.5") W; 292 mm (11.5") H
Gas supply	Clean, dry, oil-free air or nitrogen
Recommended gas inlet flow rate/pressure	113.3 l/min (4 scfm) @ 80 psi (5.5 bar)
Input power cable length	3 m (10')
Power supply type	Inverter – IGBT
Engine drive requirement	5.5 kW for full 30 A output
Recyclability	100%
Warranty	Power supply: 6-year, Torch: 1-year



Ordering information – CSA

Below are the standard system configurations, which include a power supply, torch, and work lead

Powermax30 XP® power supplies	Duramax LT torch hand torch with 4.5 m (15') lead and work clamp with 4.5 m (15') lead	
	Handheld	Mechanized
120-240 V CSA handheld standard and carry case, gloves, and shade 5 glasses	088079	
120-240 V CSA standard handheld	088081	
120-240 V CSA mechanized		088178

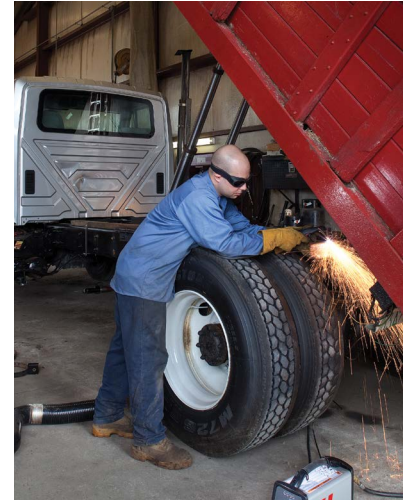
CSA – for use in the Americas and Asia, except China

Ordering information – CE

Below are the standard system configurations, which include a power supply, torch, and work lead

Powermax30 XP® power supply	Duramax LT torch hand torch with 4.5 m (15') lead and work clamp with 4.5 m (15') lead	
	Handheld	
120-240 V CE standard		088082
120-240 V CE handheld standard and carry case		088083

CE – for use in Europe, Australia & New Zealand - RCM, Serbia, UK – UKCA, Ukraine, and other countries where accepted.



Ordering information – CCC

Below are the standard system configurations, which include a power supply, torch, and work lead

Powermax30 XP® power supply	Duramax LT torch hand torch with 4.5 m (15') lead and work clamp with 4.5 m (15') lead	
	Handheld	
120-240 V CCC standard		088084

CCC – for use in China

Torch consumable parts

Consumable type	Torch type	Amperage	Shield/Deflector	Retaining cap	Nozzle	Electrode	Swirl ring
Standard	Hand	30	420116	420114	420118	420120	420211
FineCut	Hand	30	420115	420114	420117	420120	420211
HyAccess™	Hand	30		420148	420144 (cutting) 420147 (gouging)	420137	220670
Mechanized	Machine	30	220673	420148	420118	420137	420211

Electrodes and nozzles are sold in packs of five, as well as combination packs of 2 electrodes and 2 nozzles.

Description	Part number
Standard combo pack	428243
FineCut combo pack	428244

088079 Hand system includes

- Power supply, 4.5 m (15') Duramax™ LT hand torch with standard consumables, 4.5 m (15') work clamp
- 240 V/20 A plug with adapters for 120 V/15 A and 240 V/20 A circuits
- Operator and safety manuals
- Consumable kit with 1 standard nozzle, 1 electrode, 1 FineCut® nozzle and 1 FineCut deflector
- Plastic carry case
- Carrying strap
- Leather gloves
- Shade 5 glasses



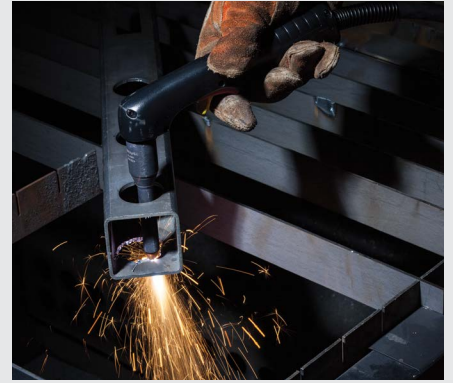
Consumable kits



Essential consumable kit

Essential kits provide a convenient assortment of standard consumables for your Powermax® system. The storage case protects and organizes your consumables and provides part number information for ease of reordering your consumables. Made in USA.

851479 Powermax30 XP kit



HyAccess consumable kit

Uniquely designed for accessibility, the patented HyAccess™ extended consumables provide the extra reach needed when cutting or gouging in hard to reach or confined spaces.

428337 HyAccess consumable kit

Recommended Hypertherm genuine accessories

Part number	Description
Face Shield: Clear face shield with flip-up shade for cutting and grinding. Safety shield included. ANSI Z87.1, CSA Z94.3, CE.	
127239	Face shield shade 6
127103	Face shield shade 8
Circle cutting guides: Quick and easy set up for accurate circles up to 70 cm (28") diameter. For optional use as a stand-off guide for straight and bevel cuts. Made in USA.	
127102	Basic kit – 38 cm (15") arm, wheels and pivot pin
027668	Deluxe kit – 28 cm (11") arm, wheels, pivot pin, anchor base and plastic case
Flip-up eyeshades: Shade 5 (for <40 A) flip-up shade, anti-scratch lens and adjustable frame. ANSI Z87.1, CSA Z94.3, CE.	
017033	Flip-up eyeshades
System dust covers: Made from a flame-retardant vinyl, a dust cover will protect your Powermax system for years. Made in USA.	
127144	Cover, Powermax30 XP

Accessories



Face shield



Flip-up eyeshades



System dust covers



Circle cutting guides

Learn more at www.hypertherm.com/powermax30XP

Unless otherwise noted in the collateral, all trademarks are property of Hypertherm, Inc. and may be registered in the United States and/or other countries.

Please visit www.hypertherm.com/patents for more details about Hypertherm Associates patent numbers and types.

© 09/2025 Hypertherm, Inc. Revision 7

860450EN-EU

As 100% Associate owners, we are all focused on delivering a superior customer experience. www.hyperthermassociates.com/ownership

Environmental stewardship is one of Hypertherm Associates' core values. www.hyperthermassociates.com/environment

100% Associate-owned

