

Smart Factory connectivity for every stage of the digital transformation journey

Connecting systems to optimize production



At Hypertherm Associates, our team, along with our family of plasma, waterjet, and software technologies, is dedicated to driving innovation in advanced manufacturing. As the leading provider of industrial cutting and shaping solutions, we ensure that our ecosystem works together seamlessly and connects effortlessly with your production processes. We are committed to supporting our valued customers at every stage of their digital transformation journey.

Smart Factory enabled products to meet all your cutting needs



No matter what stage you are in on the digital transformation journey, there are benefits to be gained by connecting your operation.



Maximize productivity of equipment on your factory floor.

Increase uptime with proactive maintenance.



Improve safety, and the overall employee experience.



Address quality issues in real-time to ensure consistent product standards.



Automate warehouse operations to ensure efficient material handling and movement.



Achieve sustainability goals by improving energy efficiency, reducing carbon emissions, conserving resources, and minimizing waste.

XPR170/300/460

Power Your Profitability. Hypertherm XPR® plasma pays you back with maximum versatility, productivity, and precision. The Hypertherm® XPR family is the world's most powerful and versatile family of mechanized plasma cutters for cutting mild steel, stainless steel, and aluminum over various thicknesses and imperfect surfaces.

You can expect superior part-to-part consistency over consumable life from the first cut to the last. XPR460's precision cutting produces parts with less dross and rework, reducing secondary operations.

Includes embedded web server for machine diagnostics and troubleshooting.

Smart Factory capabilities

- SMART Log for preventive maintenance
- SMART Log for uptime reports (when used with EDGE Connect)

The value it brings

- Can automate routine tasks
- Helps improve asset management
- Can reduce errors and unplanned shutdowns
- Assists in maintenance management



[Learn more](#)



EDGE Connect

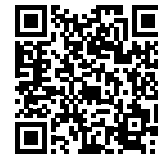
Hypertherm CNC systems are delivered worldwide with cutting expertise built in, providing consistent product performance with easy-to-use software that empowers the operator to make the optimal cut, every time. All CNCs utilize Phoenix® software for consistent operational experience and are configurable to support each specific customer need. Whether your plasma application calls for traditional or bevel cuts involving flat plate or tube/pipe, repeatability 24/7 is the standard.

Smart Factory capabilities

- Supports MT Connect
- SMART log for preventive maintenance and uptime/ error reports

The value it brings

- Standardized machine data for software platforms
- Configurable user interface to monitor process, machine data, and diagnostics.
- Remotely connectible



[Learn more](#)





Powermax SYNC

The Best Investment is in Your Power! For metal workers who want the most versatile system available to gouge, cut, and mark, the Hypertherm Powermax SYNC® delivers the best return on investment.

Featuring automated system process set-up via advanced RFID-enabled SmartSYNC® torches and a revolutionary single-piece cartridge consumable to provide users with valuable system performance data.

Smart Factory capabilities

- Powermax cartridge reader mobile app

The value it brings

- Automates routine tasks
- Correctly initiates equipment startup
- Provides access to training resources
- Helps selection of the right cartridge for the application
- With available performance data, you can make informed decisions for your cutting operation.
- Provides cartridge end-of-life (EOL) detection to reduce potential damage to the metal and torch.
- Easier trouble shooting via fault codes
- Provides access to recycling program
- Allows profile setup
- Provides life meter thresholds
- Enables mechanized cut optimization



[Learn more](#)



OMAX

Need greater Efficiency? Want more Flexibility? Expect higher Profitability? MAX it. Waterjet cutting compares favorably with other cutting methods, offering great accuracy, fast set-up time and fast cutting, while also having the ability to cut nearly any type of material with no Heat Affected Zone (HAZ) or change in material properties.

Smart Factory capabilities

- Customer dashboard with reports
- OMAX Order – a mobile application that quickly identifies and places orders for the right parts, consumables, and services.

The value it brings

- Can improve pump utilization
- Provides uninterrupted access to data streams
- Allows access to the mobile application within proximity to the OMAX machine.
- Reduces ordering time and improves order accuracy
- Provides exclusive access to order or subscribe to genuine OMAX parts



[Learn more](#)



Software to enable your digital journey

ProNest

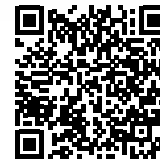
ProNest® CAD/CAM part nesting software for advanced mechanized cutting is designed to supercharge your cutting operation, helping you achieve greater automation, efficiency, and profitability. ProNest can optimize performance for plasma, laser, waterjet, and oxyfuel cutting machines.

Smart Factory capabilities

Enhanced operational efficiency

The value it brings

- Ability to integrate with virtually any third party software including ERP, MRP, MES.
- Automates manual and redundant tasks that exist in the workflow and helps reduce errors.
- Better job management for improved tracking and combining of jobs and work orders.
- Enhances management of inventory for faster turnover and reduced waste.
- Delivers accurate part and job costing for quoting.



[Learn more](#)



ProNest Production Manager

Production Manager seamlessly integrates with the Hypertherm EDGE Connect® CNC, to automatically capture machine data without the need for operator intervention. In addition, it displays real-time production data so team members across an organization can track the status of job orders, the production schedule, and pending inventory requirements. Additional features include: dashboard view, real-time information, flexible intervention, remote access.

The value it brings:

- Enhanced operational efficiency



[Learn more](#)

Digital solutions to make your work easier and more efficient

Powermax cartridge reader app for Powermax SYNC

The Powermax® cartridge reader app and the RIFD antenna for smart phones provide Powermax SYNC users with the ability to scan cartridges to get an immediate overview of the cartridge performance data and system fault data. Operators can find recommended resolutions to faults quickly with troubleshooting and training resources in the app. Advanced features such as setting life meter threshold values for cartridges and starting a job to get cartridge-to-job compatibility analysis eliminates operator errors and potential downtime.



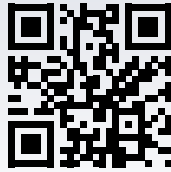
[Learn more](#)

Smart Factory capabilities

- Data-driven insights

OMAX Order

OMAX® Order helps waterjet customers identify and purchase spare parts and consumables for their systems quickly and easily. Features like *Find your Part and Easy Order* are designed to pull directly from the customer's unique machine configuration, eliminating the downtime associated with waiting for support.



[OMAX.COM](https://www.OMAX.COM)

Smart Factory capabilities

- Helps connect various systems within the factory

OMAX utilization and maintenance dashboard

Inclusive portal for customers to view training, activate software, review manuals and knowledgebases, open support cases and review reports for connected machines. Connected machine reports include Estimated Garnet Consumption, Machine Utilization, Part History, and Pump Utilization & Maintenance Schedule

Smart Factory capabilities

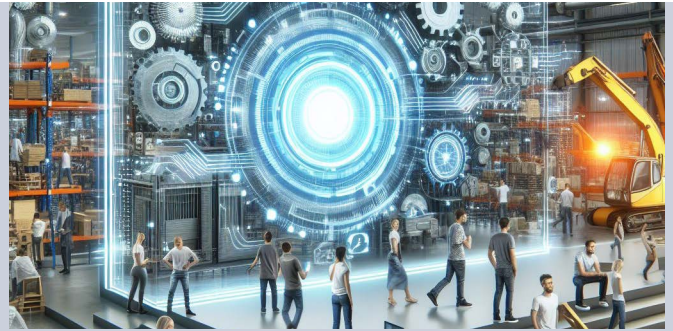
- Data-driven insights

SMART Log

Did you know performing preventive maintenance on cutting systems optimizes output, reduces unplanned downtime, and minimizes operating costs of the system? SMART Log, a digital tool making it easier than ever to keep track of your XPR® preventive maintenance tasks. Operators and service providers can be notified when preventative maintenance tasks are coming due, keep a digital record of the tasks completed, and view reports for connected machines to review uptime and fault history.

Smart Factory capabilities

- Helps connect various systems within the factory
- Data-driven insights



Join the Smart Factory evolution

The Smart Factory is more than machines and assembly lines. It's a harmonious blend of technology, data, and human expertise—that is within your reach.

Reach out to your Hypertherm plasma or OMAX waterjet representative to find the right technology for your operations.

www.hyperthermassociates.com

Unless otherwise noted in the collateral, all trademarks are property of Hypertherm, Inc. and may be registered in the United States and/or other countries.

Please visit www.hypertherm.com/patents for more details about Hypertherm Associates patent numbers and types.

© 09/2024 Hypertherm, Inc.



As 100% Associate owners, we are all focused on delivering a superior customer experience. www.hyperthermassociates.com/ownership

Environmental stewardship is one of Hypertherm Associates' core values. www.hyperthermassociates.com/environment

100% Associate-owned

