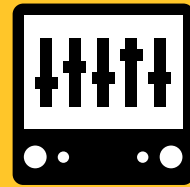




Phoenix® Software Version 10.28

Release Notes



10088333 - Revision 1

English

Warranty information

You can find warranty information for your product at www.hypertherm.com/warranty.

Recycling information

You can find recycling information for your product at www.hypertherm.com/resources/system-support/recycling/.

Contact us



www.hypertherm.com/contactus

Hypertherm, Inc.

21 Great Hollow Road, P.O. Box 5010

Hanover, NH 03755 USA

www.hypertherm.com/contact-us

Phoenix®

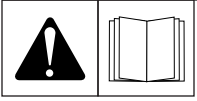
Release Notes

10088333
Revision 1

English
Original Instructions

March 2026

Hypertherm, Inc.
Hanover, NH 03755 USA
www.hypertherm.com



Safety information

WARNING! Before operating any Hypertherm equipment, read the safety instructions in your product's manual, the Safety and Compliance Manual (80669C), Waterjet Safety and Compliance Manual (80943C), and Radio Frequency Warning Manual (80945C). Failure to follow safety instructions can result in personal injury or in damage to equipment.

Copies of the manuals can come with the product in electronic and printed formats. Electronic copies are also on our website. Many manuals are available in multiple languages at www.hypertherm.com/docs.

EtherCAT is a trademark of Beckhoff Automation GmbH. IHT is a trademark of IHT Automation GmbH & Co. KG. Microsoft is a trademark of Microsoft Corporation. Windows is a trademark of Microsoft Corporation.

EDGE, HPR, HPRXD, Hypertherm, Phoenix, Powermax, Powermax SYNC, Powermax45 SYNC, ProNest, XPR, and XPR460 are trademarks of Hypertherm, Inc. and may be registered in the United States and other countries. All other trademarks are the property of their respective holders.

Environmental stewardship is one of Hypertherm's core values, and it is critical to our success and our customers' success. We are striving to reduce the environmental impact of everything we do. For more information: www.hypertherm.com/environment.

Contents

1	Install the updates.....	7
	Step 1: Back up the CNC system files.....	7
	Step 2: Back up custom cut charts (if applicable).....	7
	Step 3: Back up a custom Soft Op Con (if applicable).....	8
	Step 4: Back up the CNC image.....	8
	Step 5: Download CNC software updates.....	8
	Step 6: Install CNC software updates.....	9
	Step 7: Update XPR firmware (if applicable).....	12
	Step 8: Delete the installer.....	12
	(Optional) Update the technical support manuals.....	12
	(Optional) Install ProNest desktop version.....	13
2	Phoenix Version 10.28.0.....	15
	Release notes for 10.28.....	15
	Improvements in Phoenix 10.28.....	15
	XPR improvements.....	15
	General improvements.....	15
	Resolutions in Phoenix 10.28.....	16
	XPR resolutions.....	16
	General resolutions.....	16
	Software versions in Phoenix 10.28.....	17
	Version information by location.....	17
3	Phoenix Version 10.27.0.....	21
	Release notes for 10.27.....	21
	Improvements in Phoenix 10.27.....	21
	XPR improvements.....	21

Contents

General improvements..... 21
Resolutions in Phoenix 10.27..... 22
 Powermax resolutions..... 22
 General resolutions..... 22
Software versions in Phoenix 10.27..... 22
 Version information by location..... 23

4 Phoenix Version 10.26 and earlier..... 25

Phoenix 10.26 and earlier..... 25

1

Install the updates

Step 1: Back up the CNC system files

Computer Numerical Control (CNC) system files (*Phoenix.ini*, *LastPart.txt*, *Phoenix.xml*, *Network.xml*, *SystemErrors.log*, and others) are necessary to restore your EDGE® Connect CNC to the current configuration during troubleshooting. Hypertherm® recommends that you back up these files before you update software.

Before you begin: Make sure that you have a USB memory stick with at least 1 GB of free space.

1. In Phoenix®, select **Main > Files > Save To Disk**.
2. Select **Save System Files to Disk > Save ALL to Zip file**.

The system files are saved as *Phoenix.zip* on the USB memory stick by default.

Step 2: Back up custom cut charts (if applicable)

Cut charts are updated automatically when you update Phoenix software.

- Which type of cut charts do you use?

If you use custom cut charts...	Save your custom cut chart files onto a USB memory stick.
If you use the default cut charts...	Skip to Step 3: Back up a custom Soft Op Con (if applicable) on page 8 .

Step 3: Back up a custom Soft Op Con (if applicable)

- Does your CNC use the default Hypertherm Software Operator Console (Soft Op Con)?

If yes..	Skip to Step 4: Back up the CNC image on page 8 .
If no...	Save these files onto a USB memory stick: <ul style="list-style-type: none"> Custom Soft Op Con application, which is located wherever it was saved originally. The <i>steps.json</i> file (in the <i>C:\Phoenix</i> folder).


Step 4: Back up the CNC image

Back up the CNC image (including the operating system software, Phoenix software, and configuration files) so that you can restore the cutting system to a previous operational state if files become corrupted.

- Open the *EDGE Connect Installation and Setup manual (809340)* available at <https://www.hypertherm.com/docs>.
- Refer to the *Backup and Restore the System* procedure.

Step 5: Download CNC software updates

- On the www.hypertherm.com website, point to **Resources** to see a dropdown menu.
- In the **Resources** dropdown menu, select **Software Knowledge Base** under **Software updates and support**.
- Are you a first time Knowledge Base user?

If yes...	<ol style="list-style-type: none"> On the Knowledge Base login screen, select Create an account. Select Phoenix CNC software and Submit. On the Create Knowledge Base Account form, enter your information including your CNC Model and Serial Number. <div style="margin-top: 10px;">  <p>The CNC Serial Number is on the product label. It is also shown on the Diagnostics screen (Setups > Diagnostics) in Phoenix.</p> </div>
If no...	<ol style="list-style-type: none"> On the Knowledge Base login screen, enter your Login name and Password. Select LOG IN.

- On the **Knowledge Base home page**, select **Phoenix**.
- Under **Phoenix > Downloads**, select **Get the latest version of Phoenix software**.
- Select **EDGE CONNECT SUITE INSTALLER** to download the software.
- Save the EDGE Connect Suite Installer (*EDGE_Connect_Suite.exe*) file.

If you are at the CNC	Save the file to any location on the CNC except for <i>C:\Phoenix</i> .
If you are not at the CNC	Save the file to the root directory of a USB memory stick.

What to do next: If a duplicate copy of the installer is saved in the target location, Windows® automatically modifies the file name. If this occurs, delete the old *.exe file and rename the new *.exe file. For example, rename *EDGE_Connect_Suite(1).exe* as *EDGE_Connect_Suite.exe*.

Step 6: Install CNC software updates

The EDGE Connect Suite Installer is a **single executable (*.exe) file that now updates all the software** that is necessary to run an EDGE Connect CNC.


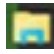
Previously, software was updated through a series of files (the *PhoenixSuiteInstaller*, *Help.exe*, *cutchart.exe*, and *ECSI.exe*). The new EDGE Connect Suite Installer lets you update the entire CNC with a single file.

For a complete list of software that is updated by the EDGE Connect Suite Installer, refer to the *Software versions* section.

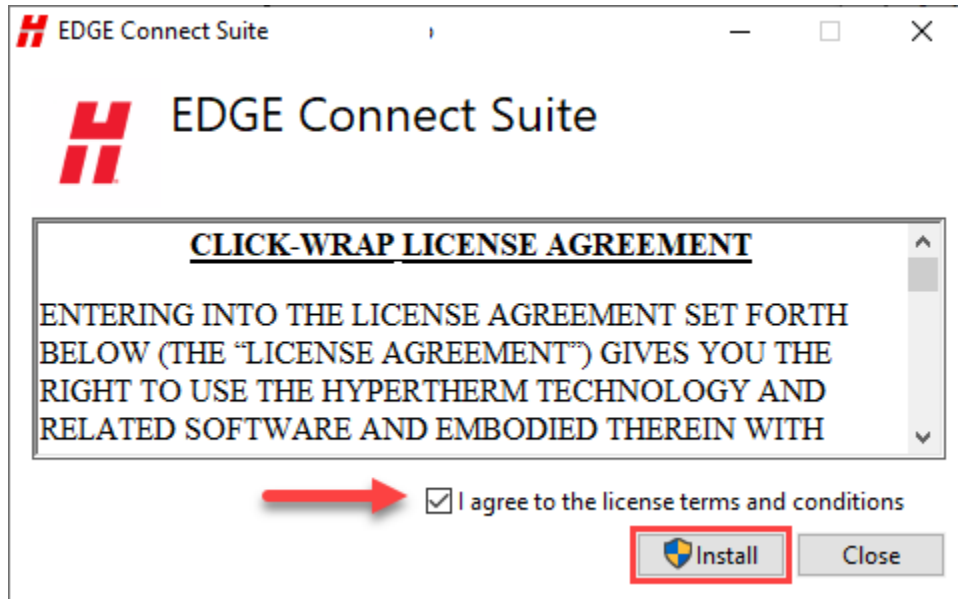
Before you begin: Before you run the EDGE Connect Suite Installer, make sure that the *EDGE_Connect_Suite.exe* file that you downloaded is saved in any location on the CNC except for the *C:\Phoenix* folder.




If you saved the file onto a USB memory stick, save the file locally on the CNC before you run the installer with the steps below.

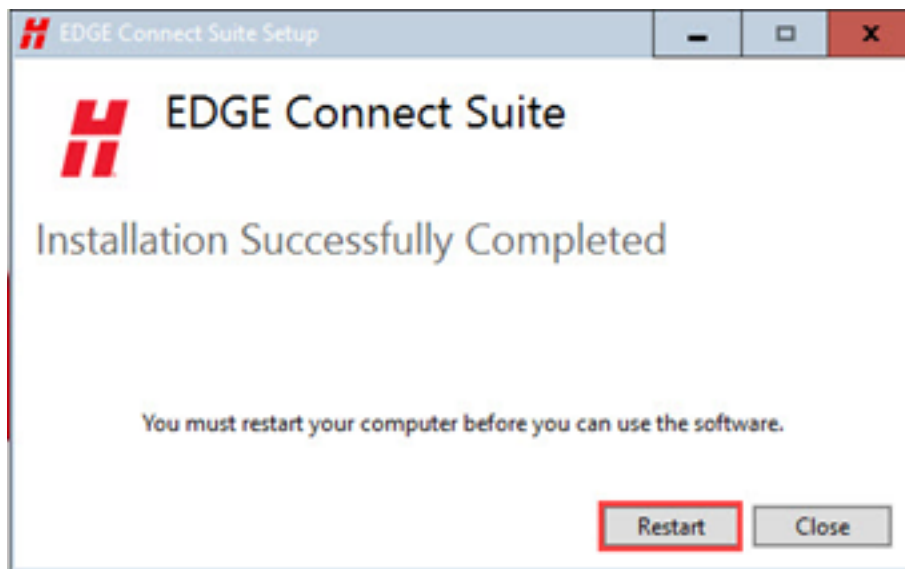
1. On the CNC, select the Windows **Start**  icon and go to **File Explorer**  to locate the *EDGE_Connect_Suite.exe* file.
2. Double-click the *EDGE_Connect_Suite.exe* file.
3. Check the box to *agree* to the terms and conditions, and then select **Install**.

1 Install the updates

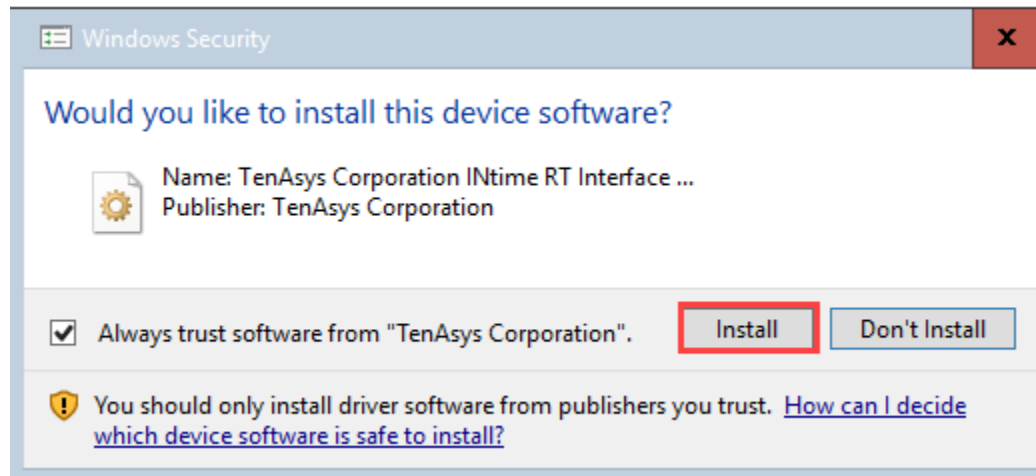


 A Progress Setup bar shows that the update is in process. Any software programs that have updates available close automatically in the background.


4. Depending on the version of software that you update from, you may see prompts a through c.
 - a. Select **Restart** if you see this prompt.

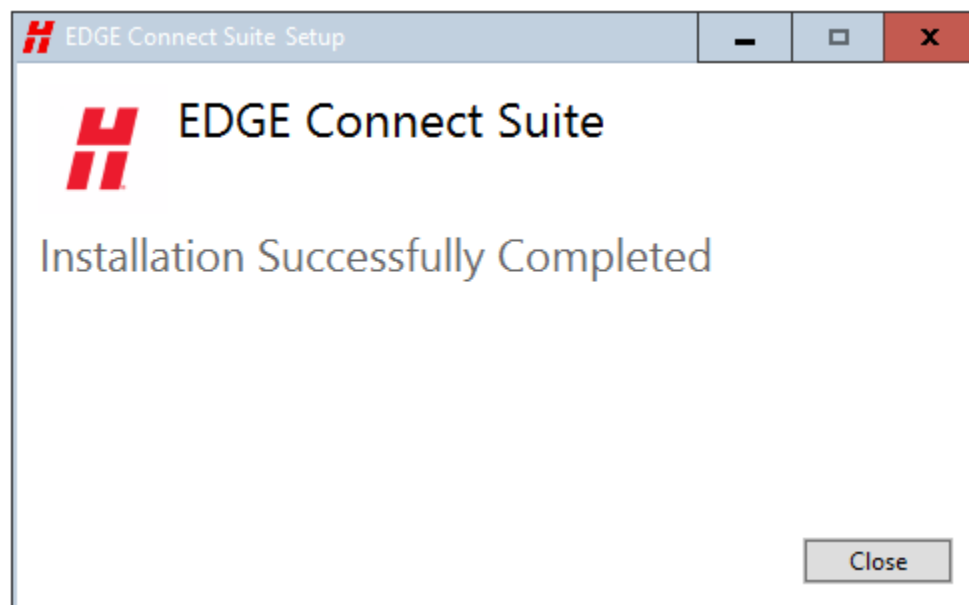


- b. After the CNC restarts, select **Install** if you see this Windows Security dialog.



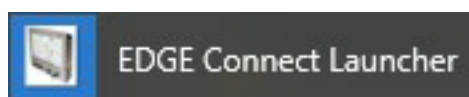
- c. If prompted, select **Restart** to restart the CNC for a second time.

 When you see the message shown below, the installation is complete.



5. Select **Close**.
6. Select the Windows **Start** button and then select **EDGE Connect Launcher** to open Phoenix and the Soft Op Con.

Note: If the **EDGE Connect Launcher** icon is missing, restart the CNC.



You may need to restore your Custom Soft Op Con from the USB that you saved in [Step 3: Back up a custom Soft Op Con \(if applicable\) on page 8](#). It is only necessary to restore the custom Soft Op Con if it was saved with the same file name as the Hypertherm default Soft Op Con.

Step 7: Update XPR firmware (if applicable)

If an XPR[®] power plasma supply is set up with the CNC, make sure that the latest XPR firmware is installed.

1. On the Main screen in Phoenix, select **Setups** > **Password**.
2. Type CHECKFOEUPDATES. If necessary, the fieldbus network starts automatically.

If XPR firmware updates are available, a dialog shows the firmware to update. Select **OK** to apply the updates.


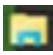


For more details, refer to the *Update XPR Firmware through Phoenix over EtherCAT application note (810720)*.

The most recent revisions of technical documents are available at www.hypertherm.com/docs.

Step 8: Delete the installer

It is only necessary to run the CNC system software installers once. After you complete the CNC system software updates, we recommend that you delete the installer to save space on the hard drive and to prevent confusion during future software updates.

1. At the CNC, select the Windows **Start** icon  and go to **File Explorer** .
2. Use the **File Explorer** to find and delete the *EDGE_Connect_Suite.exe* file.

(Optional) Update the technical support manuals

Update manuals to make the latest technical support information for Hypertherm products available at the CNC.

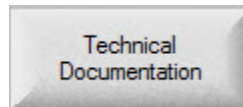
You must download Hypertherm product support manuals before you can install them on the CNC.

1. To download Hypertherm product support manuals:
 - a. Go to the Hypertherm Documents Library at www.hypertherm.com/docs.
 - b. Search for and download the manuals that you want to be available to view on the CNC.

Example: *XPR300 Plasma Instruction Manual (809480)*

- c. Save the downloaded manuals onto the root directory of a USB memory stick.
2. To install Hypertherm product support manuals on the CNC:
 - a. Put the USB memory stick with the downloaded updates into a USB connector on the CNC.
 - b. In Phoenix, go to the **Special Setups** screen at **Main > Setups > Password > Special Setups**
 - c. Select the **Update Manuals** soft key.
 - d. Select **OK** when the status message shows that the update is complete.

When you select the **Technical Documentation** soft key in Phoenix, the updated technical documentation is shown at the bottom of the screen for components that are installed on your cutting system.



(Optional) Install ProNest desktop version

If you use ProNest[®] desktop version to create nests and parts, we recommend that you download and update to the latest version that is compatible with Phoenix.

1. Log in to the [Hypertherm CAD/CAM Software Knowledge Base](#).



If necessary, create a new account.

2. Select **ProNest > Downloads > ProNest > Get the latest version of ProNest** .
3. Use the instructions in the knowledge base.



The knowledge base contains more information about the ProNest update and a variety of relevant Computer-aided Manufacturing (CAM)-specific training and educational content for channel partners.

4. Contact your regional Product Application Engineer (PAE) or Technical Support Team to get the latest XPR Machine Setup for this version of ProNest.

1 *Install the updates*

Phoenix Version 10.28.0



Release notes for 10.28

Phoenix Software Version 10.28.0 was released on March 25, 2026 and includes:

- Phoenix improvements (XPR and general)
- Phoenix resolutions (XPR and general)

Improvements in Phoenix 10.28

XPR improvements

- Added updated XPR firmware version 1.3.37 for 141545 boards. This firmware includes Extended Pilot Arc (EPA) and Gouging processes.



No updated firmware exists for 141322 boards and they will not have access to EPA and Gouging processes without a hardware update.

General improvements

- Phoenix has been updated to support version 2.3.10 of Phoenix Soft Op Con API .
- Updated Phoenix Soft Op Con and MinReqOpCon to version 2.3.2.5, built with latest Phoenix OpCon API version 2.3.10.0.
- Added a **Go To Home X or Y** speed setting to the **Speeds** screen to allow for adjusting the speed to be used with an **M77** or **M78** code as a percentage of Maximum Machine Speed. This value sets the machine speed when the torch station is going to the home position on the X or Y axis, based on the use of the **M77** or **M78** commands in a part program. The default value is 25%.

- Phoenix now informs users when they try to use a password that is no longer supported.
- Added support for 2 passwords: NRH and RH
 - NRH - "No Rotate Homing"
 - RH - "Rotate Homing"

When the NRH password is entered, the user will not have to home the rotate axis and the servo drive is NOT required to be a device on the EtherCAT® network.

- Updated *Application Note 810790 (Pipe and Tube Cutting on EDGE Connect CNCs)* to explain how to configure a dual transverse for pipe or tube cutting with a single bevel head that does not include a rotate axis.

The most recent revisions of technical documents are available at www.hypertherm.com/docs.

- Released *Application Note 10088915* that explains how to set up Phoenix for use with an IHT® M4000 lifter.
- Released *Application Note 10088919* that explains how to do Oxyfuel Cutting with Phoenix on an EDGE Connect CNC.

The most recent revisions of technical documents are available at www.hypertherm.com/docs.

Resolutions in Phoenix 10.28

XPR resolutions


- Fixed an issue where digital Input/Output (I/O) stopped functioning when an XPR was taken out for service.
- Fixed an issue where process updates could be delayed for part programs that contained XPR cut height overrides on many pierces.
- Resolved an issue where using the part program command `M07 CHT` (to turn cutting ON and override the cut height) would cause Phoenix to stop working if a secondary marker was implemented and the previous cycle was stopped on a mark.
- Resolved an issue that caused Phoenix to stop working when interacting with the Smart Log arrow button.

General resolutions

- Leading or trailing spaces in marking commands can cause parts to be misaligned. Phoenix will now remove unwanted spaces to prevent this issue.
- Phoenix will now ignore part program comments when scanning for special codes.

Software versions in Phoenix 10.28

The tables that follow are grouped by the location where the version information is shown.

- To see version information for Windows, Phoenix, Real-Time OS, Fieldbus Master, Real-Time Module, Programmable Logic Controller (PLC) engine, System Image, and operator console APIs: Select **Main > Setups > Diagnostics > Control Information**.
- To see version information for cut charts, select **Main > Setups > Process > Cut Chart**. The version information is shown in the top-left corner of the screen.
- To see version information for other items, select the **Windows Start** icon  and go to **All apps > Windows System > Control Panel > Programs and Features**.

If you need to update the CNC or have any other questions about software versions, contact your regional Technical Support Team at www.hyperthermcam.com/en-us/company/contact-us/.

Version information by location

Table 1 - Shown on the Phoenix Diagnostics screen

Item ¹	Versions / Revisions
Windows	10.00.17763
Phoenix	10.28.0.425
Real-Time OS	6.3.19040.2
Field Bus Master	1.5.61209.0
Real-Time Module	10.28.0.425
PLC engine	1.1.0.0
Phoenix OpCon API	2.3.10.0
Active OpCon APIs	2.3.10.0

¹ All items in this table are included in the EDGE Connect Suite Installer except for the Windows operating system and Soft Op ConAPIs. Any items, programs, or features not assigned to the suite installers are unaffected by software updates.

Table 2 - Shown on the Cut Chart screen

Item ¹	Versions / Revisions
XPR	W
HPRXD [®]	AA
HPR [®]	80003Ea and 80003Eb
Oxyfuel	F
Powermax [®]	00E

1 All items in this table are included in the EDGE Connect Suite Installer.

Table 3 - Shown in the XPR web application

Item ¹	Versions / Revisions ²
XPR main control	V - 890
XPR torch connect	U - 301
XPR gas connect	U - 263
XPR choppers	U - 288
XPR wireless	U - 29973


1 All items in this table are included in the EDGE Connect Suite Installer.

2 If the XPR Diagnostics View at the CNC shows firmware revision W, this indicates that the component is using Semantic Versioning to report the firmware revision. Refer to the XPR Web Interface tool on your wireless-enabled device for the exact firmware revision number.

Table 4 - Shown on the Windows Programs and Features screen

Item ¹	Versions / Revisions
Backup and Restore Utility	1.1.6592.40703
Cut Charts	2.1.4.7
EDGE Connect Broker	1.3.1.19
EDGE Connect Launcher	Not applicable
EDGE Connect Suite	1.20.0.41
Hypertherm Connect Client	1.1.6912.22365

Table 4 - Shown on the Windows Programs and Features screen (continued)

Item ¹	Versions / Revisions
Hypertherm Device Firmware	<ul style="list-style-type: none"> ▪ XPR firmware (Shown in the XPR web application): <ul style="list-style-type: none"> - 1.2.55 or later if manufactured after November 15, 2025 - V if manufactured before November 15, 2025 <div style="margin-top: 10px;">  Component versions in the firmware package can be different. </div> <ul style="list-style-type: none"> ▪ Powermax interface firmware revision B-15
Hypertherm EtherCAT Studio	1.2.0.2
INtime for Windows Runtime	6.3.19040.2
INtime License Helper	1.0.1.4
KPA EtherCAT Studio	1.12.2201.0
KPA Licensing Utilities	2.5.900
KPA MRT	1.5.61209.0
Microsoft® XML Notepad	2.7.1.15
MTConnect Agent	1.2.0.2
Phoenix	10.28.0.425
ProNest CNC Archives	1.27.6.1
ProNest CNC Client	1.1.62.13
ProNest CNC Nesting software	16.2.3.9413

¹ All items in this table are included in the EDGE Connect Suite Installer. Any items, programs, or features not assigned to the suite installers are unaffected by software updates.

Phoenix Version 10.27.0



Release notes for 10.27

Phoenix Software Version 10.27.0 was released on November 12, 2025 and includes:

- Phoenix improvements (XPR and Powermax)
- Phoenix resolutions (XPR and general)

Improvements in Phoenix 10.27

XPR improvements

- XPR cut charts are updated to version 00V and ProNest CNC is updated to version 16.2.3.9413.
- Updating XPR firmware with Filetransfer over EtherCAT (FOE) is now supported for all XPR models including XPR460®.

General improvements

- Added a toggle to the **Setups** screen that sets the default clamp position after homing: either to the band (Station Clamp ON) or to the table (Station Lock ON). The label for this toggle is **Homing Default to Clamp**.
- Phoenix now supports using the Sigma-X SGDXS (single-axis) drive. For details, refer to *Application Note 809910 (Yaskawa Sigma EtherCAT Drives Supported by EDGE Connect CNC)*. The most recent revisions of technical documents are available at www.hypertherm.com/docs.

Resolutions in Phoenix 10.27

Powermax resolutions


ProNest CNC archives for Powermax SYNC® and Powermax45 SYNC® have been updated.

General resolutions

- The **Increase Speed** softkey is now limited by the maximum machine speed.
- The softkeys in Phoenix are now available and responsive after a Hardware Overtravel occurs.
- ProNest CNC now uses thread protection to prevent concurrency-related issues that previously caused the Machine Not Available error.
- Resolved an issue that caused the Phoenix stopped working message when previewing a large part program and then exiting the **Files > Load** or **Files > Save** screens.
- Resolved an issue that caused Phoenix to stop working when using the **Files > Load** or **Files > Save** screens with an inaccessible remotely mapped drive. Now, Phoenix will display an informational dialog if the mapped drive or directory is not available. To improve user experience, this dialog shows during the validation of mapped drives: The system is busy. Please wait.... If the mapped drive is not accessible within ten seconds, Phoenix notifies the user.
- Removed the previously disabled **Multitasking** softkey from the Phoenix user interface.

Software versions in Phoenix 10.27

The tables that follow are grouped by the location where the version information is shown.

- To see version information for Windows, Phoenix, Real-Time OS, Fieldbus Master, Real-Time Module, PLC engine, System Image, and operator console APIs: Select **Main > Setups > Diagnostics > Control Information**.
- To see version information for cut charts, select **Main > Setups > Process > Cut Chart**. The version information is shown in the top-left corner of the screen.
- To see version information for other items, select the **Windows Start** icon  and go to **All apps > Windows System > Control Panel > Programs and Features**.

If you need to update the CNC or have any other questions about software versions, contact your regional Technical Support Team at www.hyperthermcam.com/en-us/company/contact-us/.

Version information by location

Table 5 - Shown on the Phoenix Diagnostics screen

Item ¹	Versions / Revisions
Windows	10.00.17763
Phoenix	10.27.0.760
Real-Time OS	6.3.19040.2
Field Bus Master	1.5.61209.0
Real-Time Module	10.27.0.760
PLC engine	1.1.0.0
Phoenix OpCon API	2.0.0.0
Active OpCon APIs	2.0.0.0

¹ All items in this table are included in the EDGE Connect Suite Installer except for the Windows operating system and Soft Op Con APIs. Any items, programs, or features not assigned to the suite installers are unaffected by software updates.

Table 6 - Shown on the Cut Chart screen

Item ¹	Versions / Revisions
XPR	V
HPRXD	AA
HPR	80003Ea and 80003Eb
Oxyfuel	F
Powermax	00E

¹ All items in this table are included in the EDGE Connect Suite Installer.


Table 7 - Shown in the XPR web application

Item ¹	Versions / Revisions ²
XPR main control	V - 890
XPR torch connect	U - 301
XPR gas connect	U - 263
XPR choppers	U - 288
XPR wireless	U - 29973

¹ All items in this table are included in the EDGE Connect Suite Installer.

- 2 If the XPR Diagnostics View at the CNC shows firmware revision W, this indicates that the component is using Semantic Versioning to report the firmware revision. Refer to the XPR Web Interface tool on your wireless-enabled device for the exact firmware revision number.

Table 8 - Shown on the Windows Programs and Features screen

Item ¹	Versions / Revisions
Backup and Restore Utility	1.1.6592.40703
Cut Charts	1.0.423.1
EDGE Connect Broker	1.3.1.19
EDGE Connect Launcher	Not applicable
EDGE Connect Suite	1.19.0.80
Hypertherm Connect Client	1.1.6912.22365
Hypertherm Device Firmware	<ul style="list-style-type: none"> ▪ XPR firmware (Shown in the XPR web application): <ul style="list-style-type: none"> - 1.2.55 if manufactured after November 15, 2025 - V if manufactured before November 15, 2025 <div style="text-align: center; margin: 10px 0;">  Component versions in the firmware package can be different. </div> <ul style="list-style-type: none"> ▪ Powermax interface firmware revision B-15
Hypertherm EtherCAT Studio	1.2.0.2
INtime for Windows Runtime	6.3.19040.2
INtime License Helper	1.0.1.4
KPA EtherCAT Studio	1.12.2201.0
KPA Licensing Utilities	2.5.900
KPA MRT	1.5.61209.0
Microsoft XML Notepad	2.7.1.15
MTConnect Agent	1.2.0.2
Phoenix	10.27.0.760
ProNest CNC Archives	1.27.6.1
ProNest CNC Client	1.1.62.13
ProNest CNC Nesting software	16.2.3.9413

¹ All items in this table are included in the EDGE Connect Suite Installer. Any items, programs, or features not assigned to the suite installers are unaffected by software updates.

Phoenix Version 10.26 and earlier



Phoenix 10.26 and earlier

Release notes for Phoenix version 10.1–10.26 are available in *Application Note 809720*.

The most recent revisions of technical documents are available at www.hypertherm.com/docs.

