



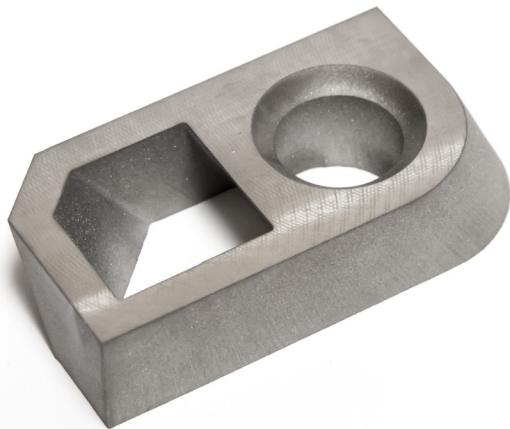
OMAX®

A Hypertherm Associates Brand

VersaJET

Multi-Axis Cutting Head

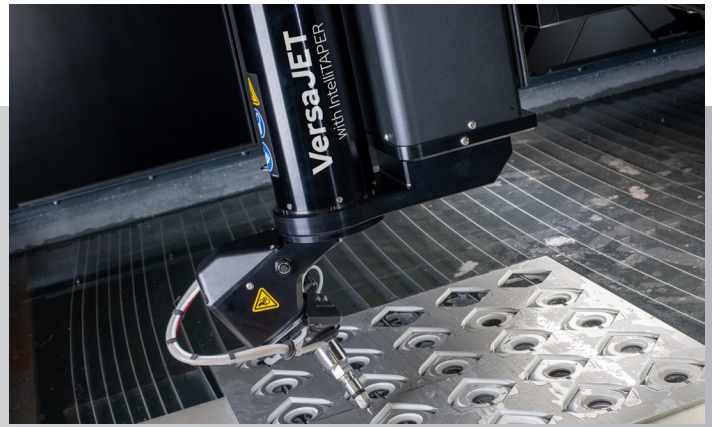
The VersaJET® is a completely software-controlled 5-axis cutting head that greatly expands the versatility of your abrasive waterjet. The VersaJET has a cutting range of 0° to 60° for cutting beveled edges, angled sides, countersinks, and complex 3D shapes. The cutting head virtually eliminates taper on finished parts with automatic taper compensation. With its inherent high level of positioning accuracy, the VersaJET can cut parts that don't require secondary finishing, significantly reducing part production time.



The VersaJET helps eliminate tapers and makes cutting bevels simple.



Precise and complex three-dimensional parts become a reality.



3D Functionality

The continuous precision 5-axis movement of the VersaJET cutting head allows for detailed 3D shapes to be cut from a wide variety of materials.

Features & benefits

- Features a fixed focal point design, where the XYZ axes do not need to move as the head tilts
- Supplied with a MAXJET® 5i Nozzle and OMAX High Angle Fusible Mixing Tube that protects precision mechanism
- Eliminates secondary machining and grinding for fabrication processes, ideal for common welding projects
- Easily creates countersinks and weld-ready edges
- Precision angular motion can create unique 3D parts
- Fully automatic taper compensation to minimize taper on finished parts

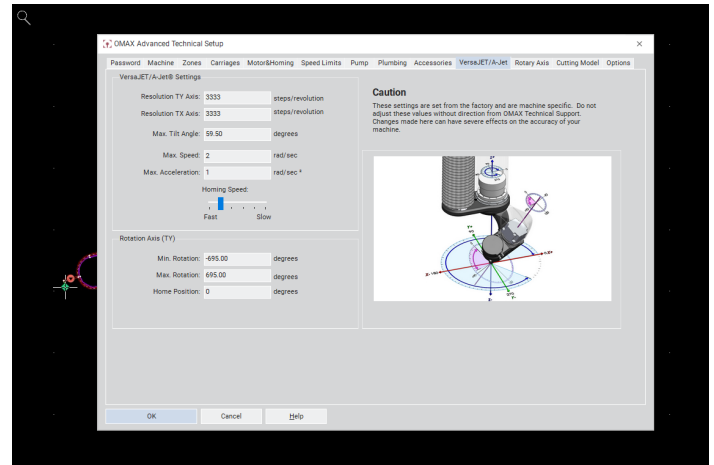
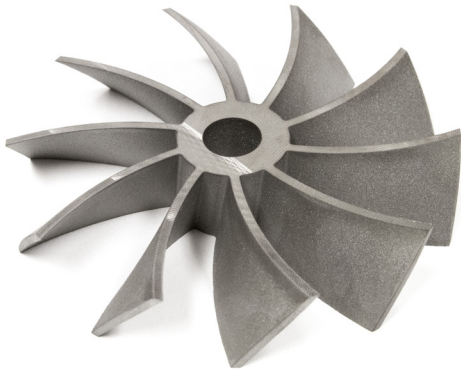


Specifications

- Cutting angle ranges from 0° to 60°
- Z-axis travel: 6" (152mm), up to 8" (203mm) when using shorter table slats in the Catcher Tank

Requirements

- An OptiMAX or MAXIEM JetMachining Center
- IntelliMAX® Software Suite



The IntelliMAX software provides full control over the VersaJET in an easy-to-use interface.

Options

- The VersaJET Terrain Follower automatically adjusts to accommodate warped flat plate
- The OptiMAX Rotary Axis allows for complex and challenging 3D shapes to be cut, such as weld-ready beveled pipe fittings

World-class service, support and innovation for advanced abrasive waterjet systems

OMAX, part of Hypertherm Associates, sets the standard for service and support in the waterjet machine tool industry. It starts with a rigorous certification program at OMAX in Kent, Washington where OMAX direct and distributor technicians are trained to install, operate and maintain OMAX abrasive waterjet systems. OMAX engineers continue to innovate technology for abrasive waterjet machining, from proven 4th generation pump designs to cutting edge drive systems with micron-level accuracy. Customers have a number of contact options to suit their schedules and needs, including an extensive library of online resources. With the largest abrasive waterjet support network in the world, OMAX continues to shape the future of waterjets.

To see how an OMAX abrasive waterjet system can save you time and money, call or visit our website and request a free part analysis today.



For more information, visit: www.omas.com

Unless otherwise noted in the collateral, all trademarks are property of Hypertherm, Inc. and may be registered in the United States and/or other countries. All other trademarks are the properties of their respective owners.

Please visit www.omas.com/patents for more details about Hypertherm Associates patent numbers and types.

© 4/2025 Hypertherm, Inc. Revision 2
MKT241



**HYPERTHERM
ASSOCIATES™**

As 100% Associate owners, we are all focused on delivering a superior customer experience.
www.hyperthermassociates.com/ownership

Environmental stewardship is one of Hypertherm Associates' core values. www.hyperthermassociates.com/environment

100% Associate-owned

