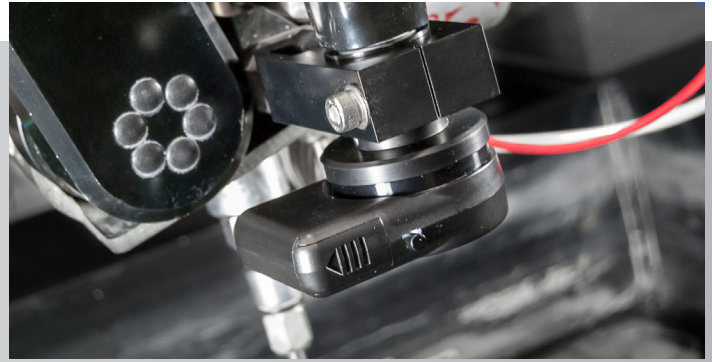




OMAX®

A Hypertherm Associates Brand

Precision Optical Locator



The Precision Optical Locator (POL) is an accessory that combines hardware and software technology to allow you to quickly and easily determine the location of parts on the machining table or features on existing parts or materials. The POL includes a compact video camera mounted to the Z-axis to precisely locate points, edges, or holes on a piece of material placed on the OMAX JetMachining® Center's cutting table. The POL's software is integrated with IntelliMAX® MAKE, providing you the interface to view the live video feed from the camera and apply alignment tools to measure and locate features.

Features & benefits

- High definition camera with microscope lens to zoom in on material features, locate, and select points with the software's precision crosshair alignment tool
- Video image of featured location can be saved for quality control records
- Light ring illuminates viewing area
- When used with OMAX Watcher Utility, the POL allows remote machine monitoring and shutdown
- Includes two camera tripods, a 250-inch ethernet cable, and a sturdy accessory carrying case
- Camera resolution up to 2592 x 1944 pixels
- Video/optical locating system eliminates the need for cumbersome point location using time consuming dial indicators
- Video monitoring and software functions measure the location of material features to prepare for secondary machining, such as drilling in the center of a disk
- Pick up locating points without the operator leaving the control console

Best Applications

- Locate tool path with existing features when material is larger than the cutting area of the machine
- Reverse engineer or measure existing parts

Requirements

- Motorized Z-Axis or Tiltajet® cutting head
- Remove POL during cutting operations

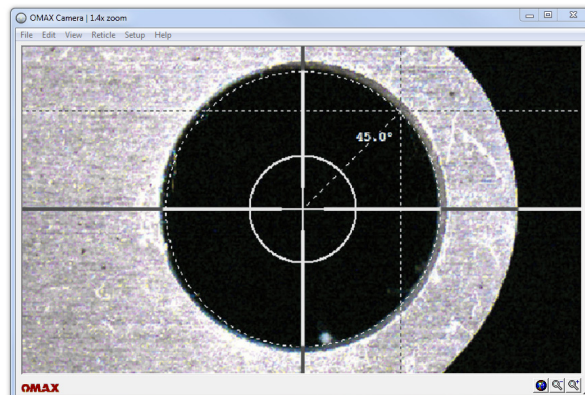
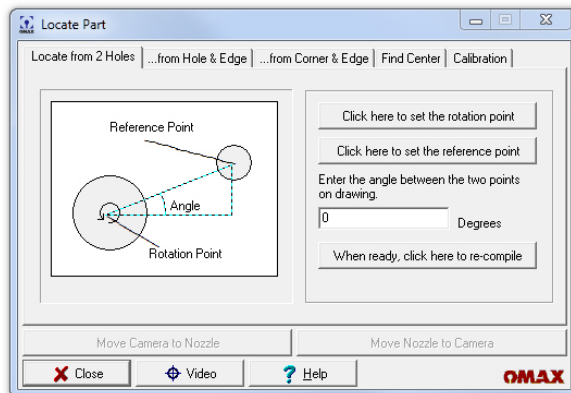


Software Interface

From the Precision Optical Locator's Locate Part window (see image to the right), select a method tab to determine the location of a part, such as "Find Center." From the OMAX Camera window (image right, below), use the application's precision crosshairs to locate specific part features, such as a center of a circle, an edge, or a corner.

Software Capabilities

- Locating a part's feature from two reference holes
- Locating a part's feature from a hole and an edge
- Locating a part's feature from a corner and an edge
- Finding the exact center of a circle
- An instructional wizard for rotating part tool paths to align with existing materials
- Digital and full screen views
- Interaction with the Intelli-MAX Software Suite
- Measurement and reverse engineering tools



World-class service, support and innovation for advanced abrasive waterjet systems

OMAX, part of Hypertherm Associates, sets the standard for service and support in the waterjet machine tool industry. It starts with a rigorous certification program at OMAX in Kent, Washington where OMAX direct and distributor technicians are trained to install, operate and maintain OMAX abrasive waterjet systems. OMAX engineers continue to innovate technology for abrasive waterjet machining, from proven 4th generation pump designs to cutting edge drive systems with micron-level accuracy. Customers have a number of contact options to suit their schedules and needs, including an extensive library of online resources. With the largest abrasive waterjet support network in the world, OMAX continues to shape the future of waterjets.

To see how an OMAX abrasive waterjet system can save you time and money, call or visit our website and request a free part analysis today.



UL 508A, CAN/CSA C22.2 No. 14,
CAN/CSA C22.2 No. 73
ISO 9001:2015 Certified

For more information, visit: www.omas.com

Unless otherwise noted in the collateral, all trademarks are property of Hypertherm, Inc. and may be registered in the United States and/or other countries. All other trademarks are the properties of their respective owners.

Please visit www.omas.com/patents for more details about Hypertherm Associates patent numbers and types.

© 7/2025 Hypertherm, Inc. Revision 2
MKT075



**HYPERTHERM
ASSOCIATES**

As 100% Associate owners, we are all focused on delivering a superior customer experience. www.hyperthermassociates.com/ownership

Environmental stewardship is one of Hypertherm Associates' core values. www.hyperthermassociates.com/environment

100% Associate-owned

